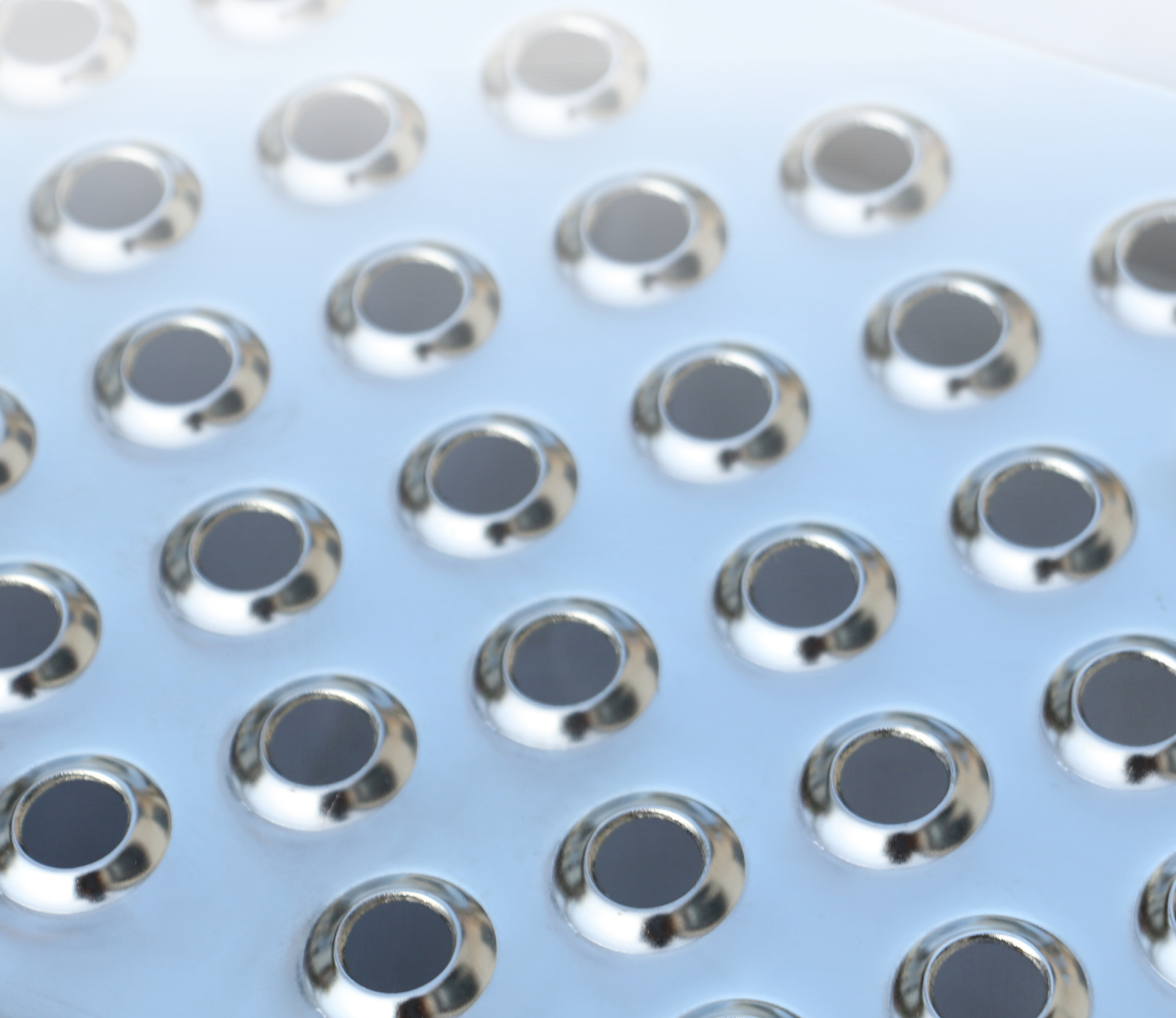




Traction Tread Safety Grating





ABOUT QIUSUO

Hebei Qiusuo Wire Mesh Products Co., Ltd., located in Anping, Hebei, China, is a professional perforated metal and wedge wire screen manufacturer & supplier. Our perforated metal safety grating products ranging from Perf O-grip safety grating, grip-strut safety grating, traction thread safety grating, interlocking safety grating, variety anti-slip holes pattern safety grating and its accessories.

We have professional experienced products engineer, technical worker, technical sales consultant, sales engineers, purchasing team, QC team, engineering design team. we are swiftly evolving into a solution-oriented manufacturer and supplier, continuously optimize supply chain and manufacturing capabilities, continuously improve procurement capabilities, quality control capabilities, product development and design capabilities, and customize high-quality products to meet the individual needs of customers in multiple industry fields.

Please send us your drawing, picture or idea, we are glad to answer and resolve all your issues, not only doing regular products, and we also aim to supply more tailored solutions and products for every project.

CONTENTS



04

Brief Introduction

05

General Materials

06

Traction Tread Safety Grating – Styles

09

Key Parameter

09

How to Order

10

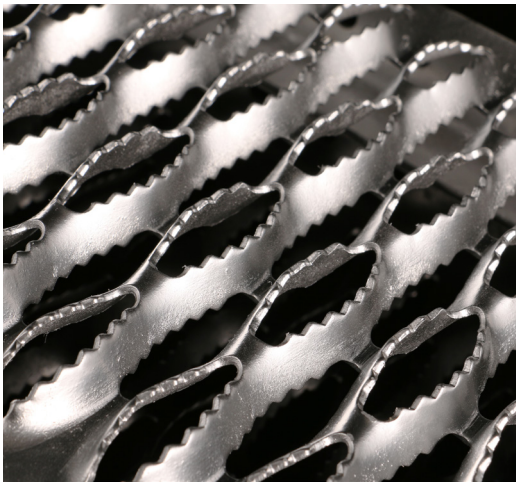
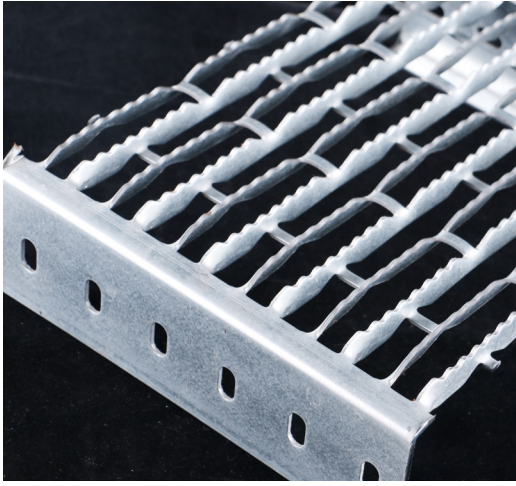
Safe Loading Tables

14

Accessories for Standard Traction Tread Safety Grating

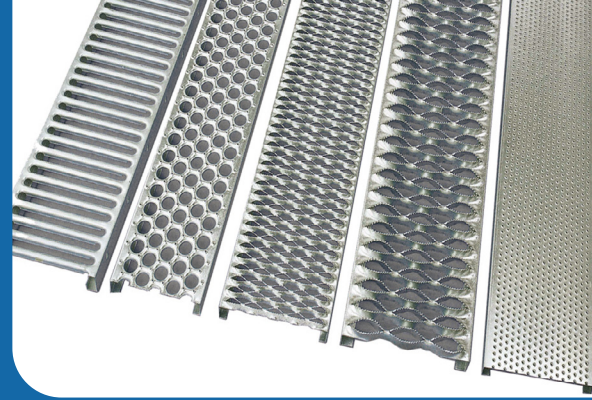
14

Application

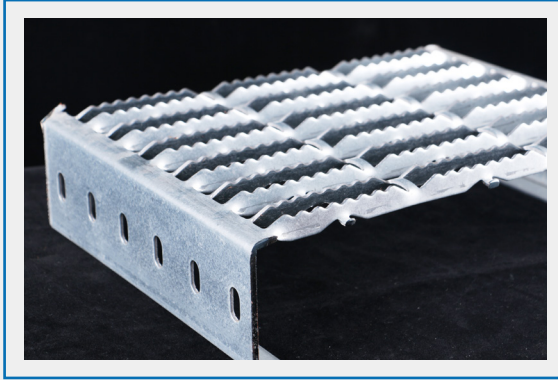


BRIEF INTRODUCTION

Personal safety has always been a highly valued issue in the process of industrial production and building construction. Safety gratings can effectively avoid the occurrence of this problem. According to different application environments and ant-skid grade requirements, we produce and offer the safety gratings with different patterns. Main products include grip-strut (diamond-grip) safety gratings, O-grip safety gratings, traction grip safety gratings and interlocking safety gratings.



GENERAL MATERIALS



Pre-galvanized carbon steel

Galvanizing process can effectively prevent steel corrosion and rust, so as to prolong the service life of steel.



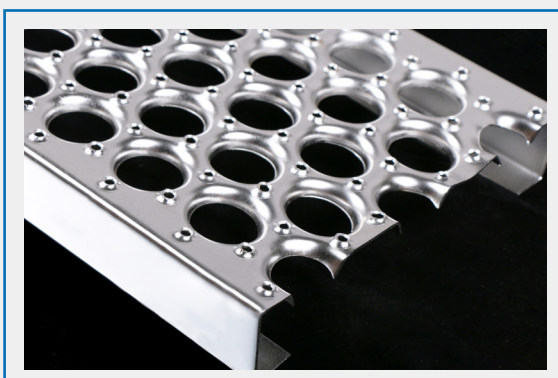
HRPO carbon steel

Hot Rolled Pickled and Oiled (HRPO) steel is produced to protect the steel from rust and corrosion. This type of material is good for fabricating, welding, bending and cold forming. Finished products have a clean and flat surface that can be used in a variety of applications.



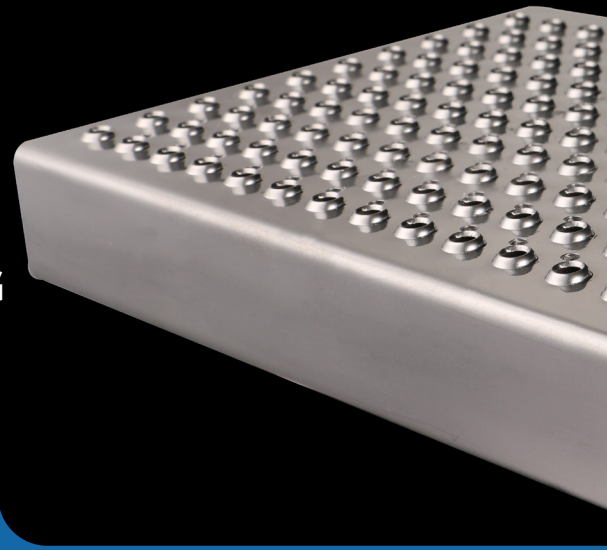
Aluminum

We adopt 5052-H32 aluminum as material. Its main alloying element is magnesium, which has excellent formability, corrosion resistance, weldability and medium strength. The load capacity of 5052-H32 aluminum can be up to 0.5 lbs./ft.



Stainless steel

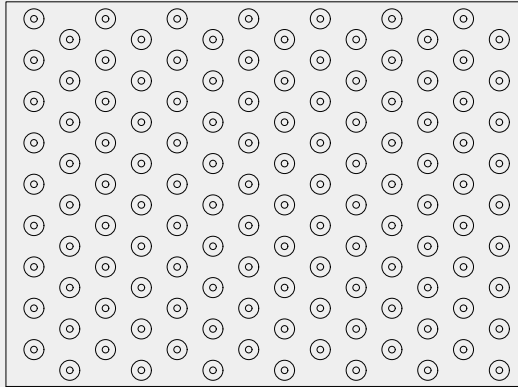
Stainless steel has good corrosion resistance, heat resistance, low temperature strength and mechanical properties. It also has good hot workability such as stamping and bending.



TRACTION TREAD SAFETY GRATING

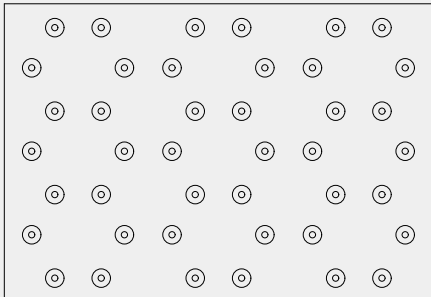
Traction tread safety grating is famous for its hundreds of perforated buttons. The unique designed traction perforations are used for drainage of the oil, water, ice, mud, detergent and any other small objects. These punching holes can be arranged into various patterns, including star, square, rectangular, OEM, drain hole and dimple only. It can be used as a reconditioning material for existing surfaces where does not provide anti-slip properties.

Moreover, it is compatible with all types of shoes including high heels.

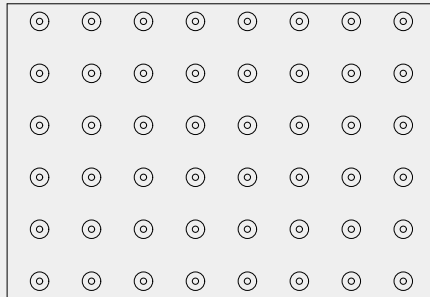


Standard pattern

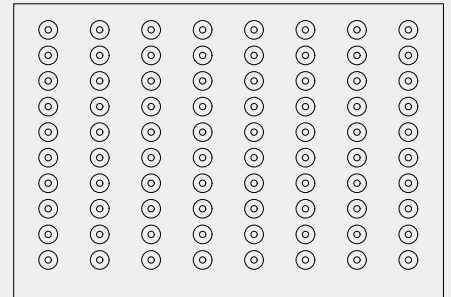
Except for standard pattern, there are six special pattern design provided for your different requirements.



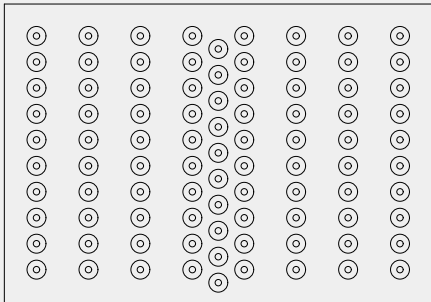
Star pattern



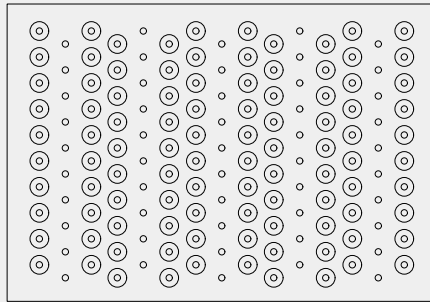
Square pattern



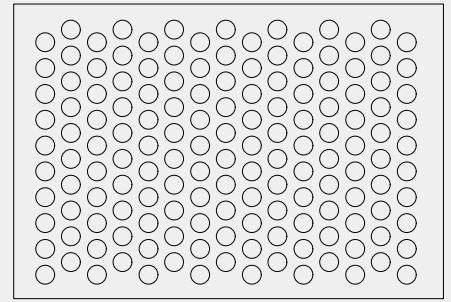
Rectangular pattern



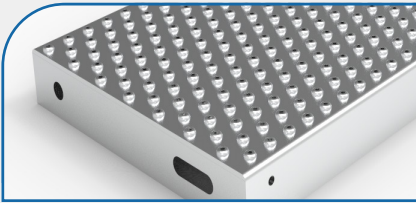
OEM pattern



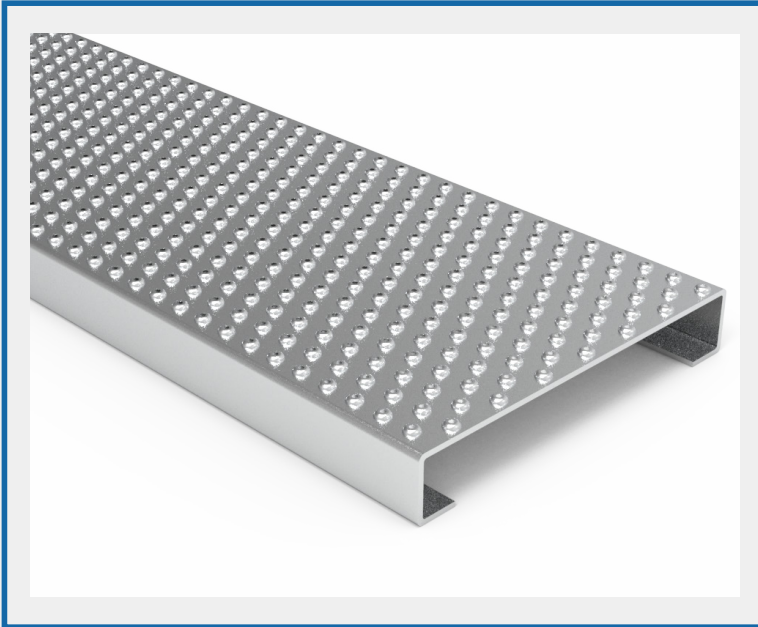
Drain hole pattern



Non-perforated pattern



TRACTION TREAD SAFETY GRATINGS ARE COMMONLY USED AS



Plank

Hole diameter: 3/8".

Width: 7", 10", 12".

Length: 10', 12' or any cut length.

Channel depth: 1-1/2", 2"



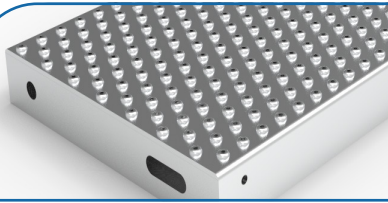
Stair Tread

Hole diameter: 3/8".

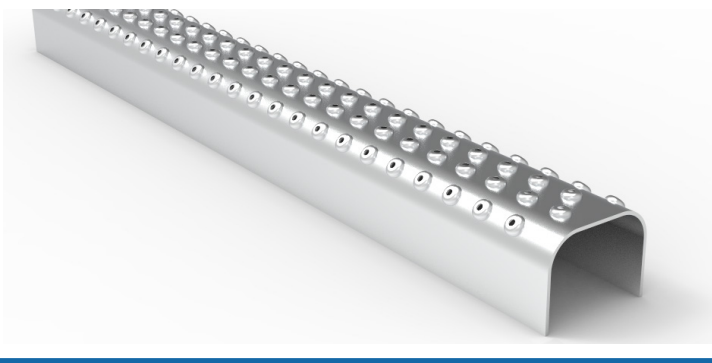
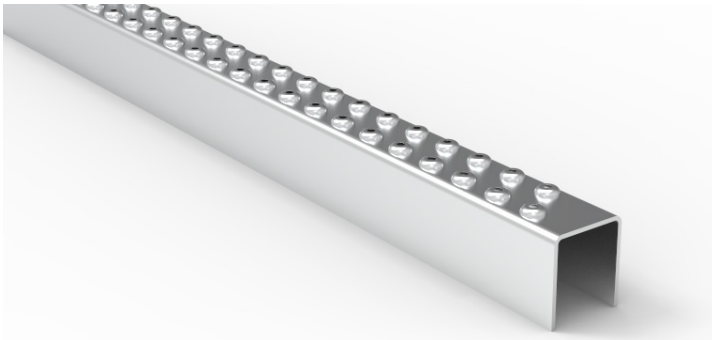
Width: 7", 10", 12".

Depth: 1-1/2", 2".

Length: 24", 30", 48" or any customized length.



Traction Tread safety gratings are commonly used as



Ladder Rungs

Hole diameter: 1/8"

Hole type: 2-hole, 3-hole, 4-hole.

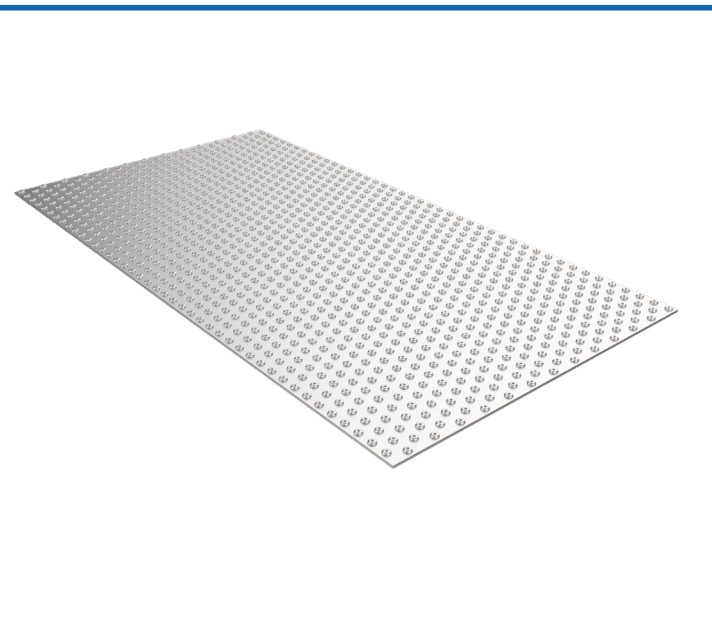
Width:

1-1/4"(2-hole), 1-5/8"(3-hole), 2-1/4"(4-hole).

Depth:

1-13/32"(2-hole), 1-13/32"(2-hole), 1-23/32"(2-hole)

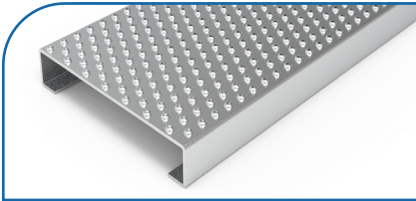
Length: 48", 60" or cut length.



Flooring Plate

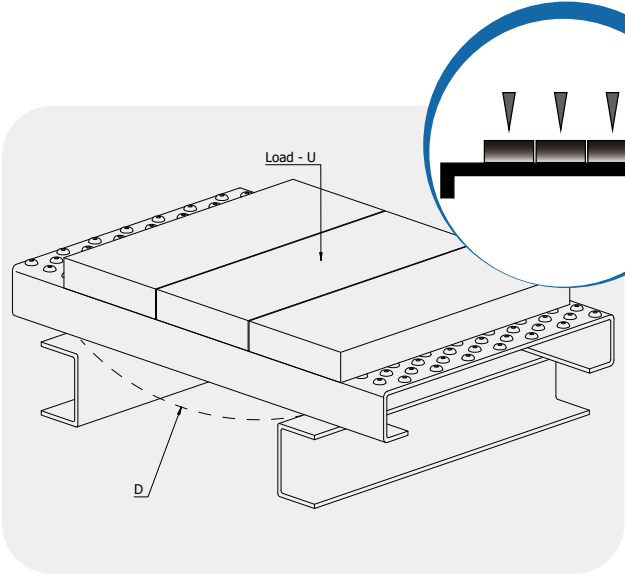
Hole diameter: 1/8"

Standard size: 3'x10', 4'x8', 1x2m

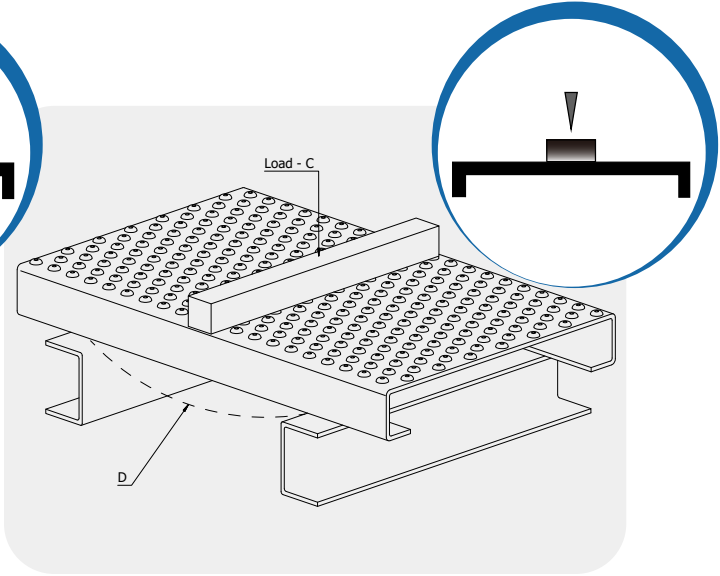


Traction Tread Plank Width: 10"

Key Parameter

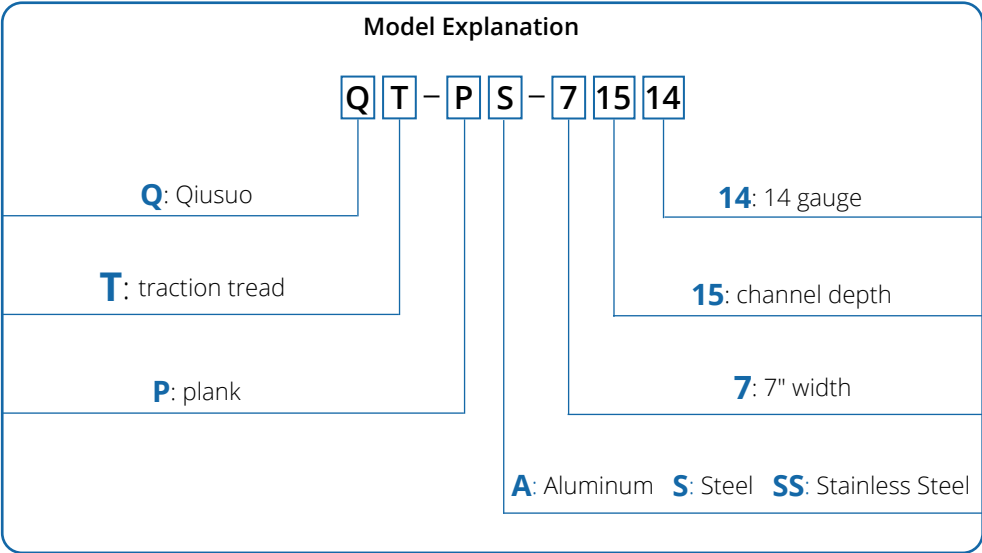


Uniform Load



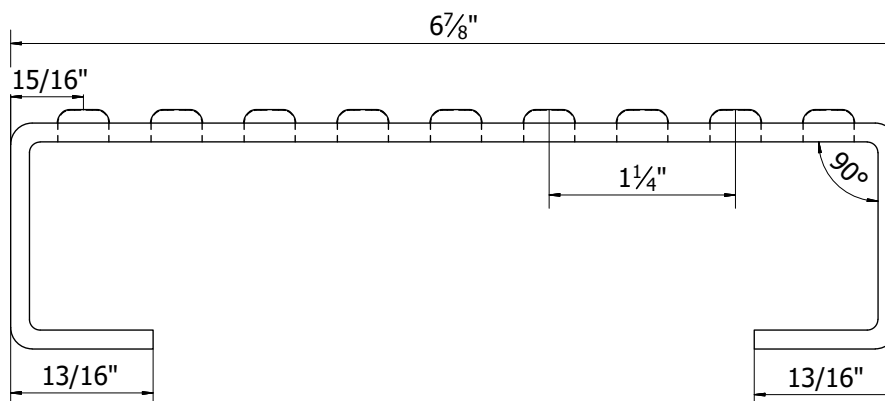
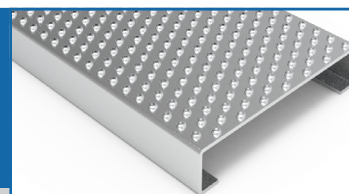
Concentrated Load

How to order



The following are **Safe Loading Tables** of parameters for different purposes.

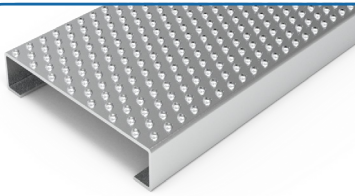
Traction Tread Plank Width: 7"



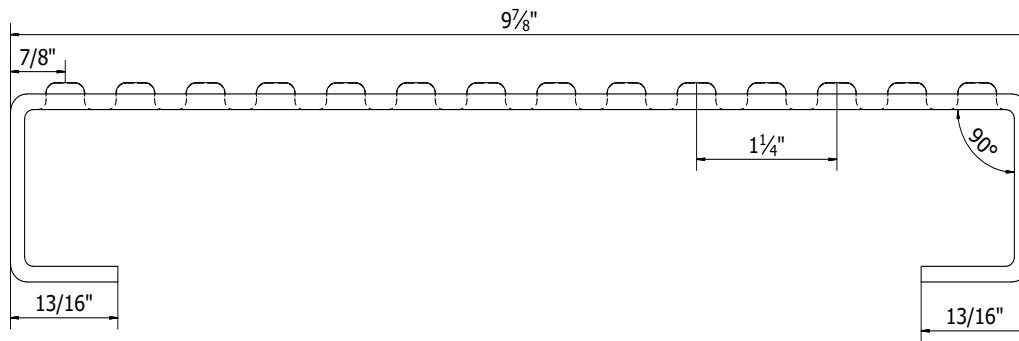
Load Table of Traction Tread Plank – 7" Width

U: uniform load (lb./ft.²) D=Deflection (in.)

Material Gauge	Channel Depth in. (mm)	Weight lb./lin. ft. (kg/m)	Catalog Number	Span																	
				2'	2.5'	3'	3.5'	4'	4.5'	5'	5.5'	6'	6.5'	7'	7.5'	8'	9'	10'	11'	12'	
Steel 13 ga.	1-1/2 (38.1)	3.40 (5.06)	QT-PS-71513	U	824	675	488	351	257	201	158	144	127	92	69						
				D	0.02	0.04	0.06	0.08	0.10	0.13	0.15	0.20	0.25	0.25	0.25						
	2 (50.8)	3.71 (5.52)	QT-PS-72013	U	1642	1345	973	700	513	400	315	287	253	184	137	104	80	50			
				D	0.02	0.04	0.06	0.08	0.10	0.13	0.15	0.20	0.25	0.25	0.25	0.25	0.25	0.25			
	3 (76.2)	4.11 (6.11)	QT-PS-73013	U	4378	3587	2595	1867	1368	1068	841	766	676	491	365	277	214	133	88	60	42
				D	0.02	0.04	0.06	0.08	0.10	0.13	0.15	0.20	0.25	0.25	0.25	0.25	0.25	0.25	0.25	0.25	0.25
Steel 11 ga.	1-1/2 (38.1)	4.72 (7.02)	QT-PS-71511	U	1032	845	612	440	323	252	198	180	159	116	86						
				D	0.02	0.04	0.06	0.08	0.10	0.13	0.15	0.20	0.25	0.25	0.25						
	2 (50.8)	5.15 (7.66)	QT-PS-72011	U	2084	1707	1235	889	651	508	400	364	322	233	174	132	102	64			
				D	0.02	0.04	0.06	0.08	0.10	0.13	0.15	0.20	0.25	0.25	0.25	0.25	0.25	0.25			
	3 (76.2)	6.13 (9.12)	QT-PS-73011	U	5619	4603	3330	2396	1756	1370	1079	982	867	630	468	355	274	171	112	77	54
				D	0.02	0.04	0.06	0.08	0.10	0.13	0.15	0.20	0.25	0.25	0.25	0.25	0.25	0.25	0.25	0.25	0.25
Alum 0.125"	1-1/2 (38.1)	1.63 (2.42)	QT-PA-715125	U	359	294	213	153	112	88	69	63	55	40	30						
				D	0.02	0.04	0.06	0.08	0.10	0.13	0.15	0.20	0.25	0.25	0.25						
	2 (50.8)	1.80 (2.68)	QT-PA-720125	U	727	595	431	310	227	177	139	127	112	81	61	46	35	22			
				D	0.02	0.04	0.06	0.08	0.10	0.13	0.15	0.20	0.25	0.25	0.25	0.25	0.25	0.25			



Traction Tread Plank Width: 10"

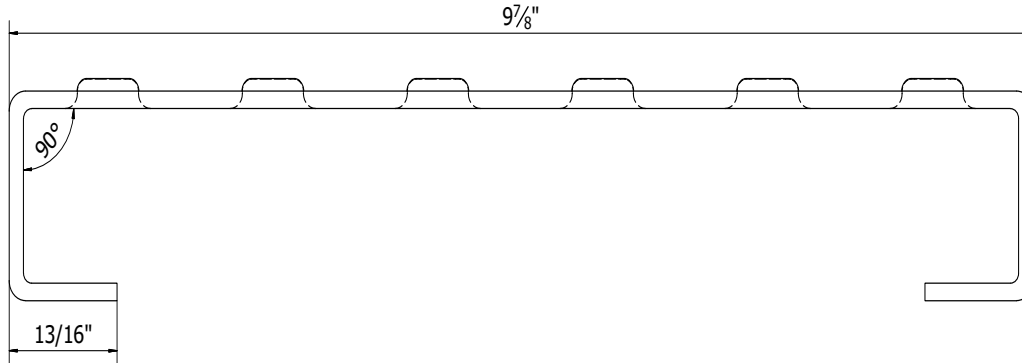
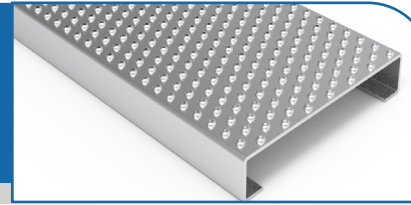


Load Table of Traction Tread Plank – 10" Width

U: uniform load (lb./ft.²) D=Deflection (in.)

Material Gauge	Channel Depth in. (mm)	Weight lb./lin. ft. (kg/m)	Catalog Number	Span																		
				2'	2.5'	3'	3.5'	4'	4.5'	5'	5.5'	6'	6.5'	7"	7.5'	8'	9'	10'	11'	12'		
Steel 13 ga.	1-1/2 (38.1)	4.32 (6.43)	QT-PS-101513	U	628	515	372	268	196	153	121	110	97	70	52							
				D	0.02	0.04	0.06	0.08	0.10	0.13	0.15	0.20	0.25	0.25	0.25							
	2 (50.8)	4.63 (6.89)	QT-PS-102013	U	1267	1038	751	540	396	309	243	221	195	142	106	80	62					
				D	0.02	0.04	0.06	0.08	0.10	0.13	0.15	0.20	0.25	0.25	0.25	0.25	0.25					
	3 (76.2)	5.24 (7.80)	QT-PS-103013	U	3412	2795	2022	1455	1066	832	655	597	527	382	284	216	167	104	68	47	33	
				D	0.02	0.04	0.06	0.08	0.10	0.13	0.15	0.20	0.25	0.25	0.25	0.25	0.25	0.25	0.25	0.25	0.25	0.25
Steel 11 ga.	1-1/2 (38.1)	6.01 (8.94)	QT-PS-101511	U	787	645	466	336	246	192	151	138	121	88	66							
				D	0.02	0.04	0.06	0.08	0.10	0.13	0.15	0.20	0.25	0.25	0.25							
	2 (50.8)	6.44 (9.58)	QT-PS-102011	U	1605	1315	951	685	502	392	308	281	248	180	134	101	78					
				D	0.02	0.04	0.06	0.08	0.10	0.13	0.15	0.20	0.25	0.25	0.25	0.25	0.25					
	3 (76.2)	7.45 (11.06)	QT-PS-103011	U	4380	3588	2595	1868	1369	1068	841	766	676	491	365	277	214	134	88	60	42	
				D	0.02	0.04	0.06	0.08	0.10	0.13	0.15	0.20	0.25	0.25	0.25	0.25	0.25	0.25	0.25	0.25	0.25	
Alum 0.125"	1-1/2 (38.1)	2.07 (3.08)	QT-PA-1015125	U	275	225	163	117	86	67	53	48	42	31	23							
				D	0.02	0.04	0.06	0.08	0.10	0.13	0.15	0.20	0.25	0.25	0.25							
	2 (50.8)	2.22 (3.30)	QT-PA-1020125	U	560	469	332	239	175	137	107	98	86	63	47	35	27					
				D	0.02	0.04	0.06	0.08	0.10	0.13	0.15	0.20	0.25	0.25	0.25	0.25	0.25					

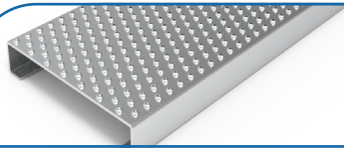
Traction Tread Plank (Large Hole) Width: 10"



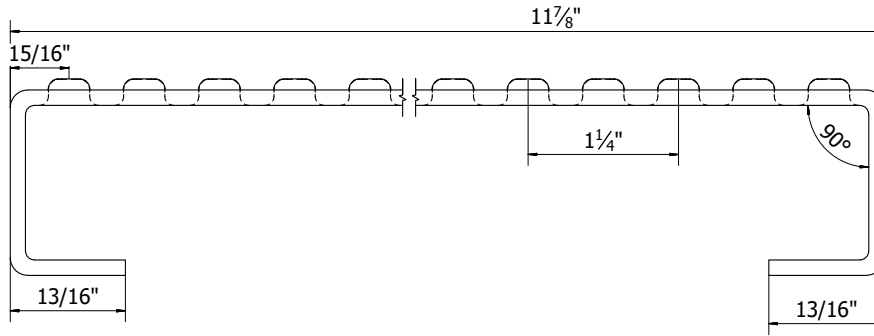
Load Table of Traction Tread Plank (Large Hole) - 10" Width

U: uniform load (lb./ft.²) D=Deflection (in.)

Material Gauge	Channel Depth in. (mm)	Weight lb./lin. ft. (kg/m)	Catalog Number	Span																		
				2'	2.5'	3'	3.5'	4'	4.5'	5'	5.5'	6'	6.5'	7'	7.5'	8'	9'	10'	11'	12'		
Steel 13 ga.	1-1/2 (38.1)	4.28 (6.37)	QTL-PS-101513	U	621	508	368	265	194	151	119	109	96	70	52							
				D	0.02	0.04	0.06	0.08	0.10	0.13	0.15	0.20	0.25	0.25	0.25							
	2 (50.8)	4.60 (6.84)	QTL-PS-102013	U	1251	1025	741	533	391	305	240	219	193	140	104	79	61					
				D	0.02	0.04	0.06	0.08	0.10	0.13	0.15	0.20	0.25	0.25	0.25	0.25	0.25					
Steel 11 ga.	1-1/2 (38.1)	5.95 (8.85)	QTL-PS-101511	U	777	637	461	331	243	190	149	136	120	87	65							
				D	0.02	0.04	0.06	0.08	0.10	0.13	0.15	0.20	0.25	0.25	0.25							
	2 (50.8)	6.37 (9.48)	QTL-PS-102011	U	1585	1299	939	676	495	387	304	277	245	178	132	100	77					
				D	0.02	0.04	0.06	0.08	0.10	0.13	0.15	0.20	0.25	0.25	0.25	0.25	0.25					
Alum 0.125"	1-1/2 (38.1)	2.05 (3.05)	QTL-PS-1015125	U	271	222	161	116	85	66	52	47	42	30	23							
				D	0.02	0.04	0.06	0.08	0.10	0.13	0.15	0.20	0.25	0.25	0.25							
	2 (50.8)	2.20 (3.37)	QTL-PS-1020125	U	553	453	328	236	173	135	106	97	85	62	46	35	27					
				D	0.02	0.04	0.06	0.08	0.10	0.13	0.15	0.20	0.25	0.25	0.25	0.25	0.25					



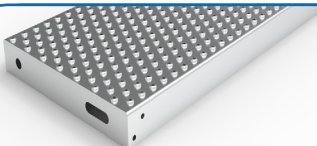
Traction Tread Plank Width: 12"



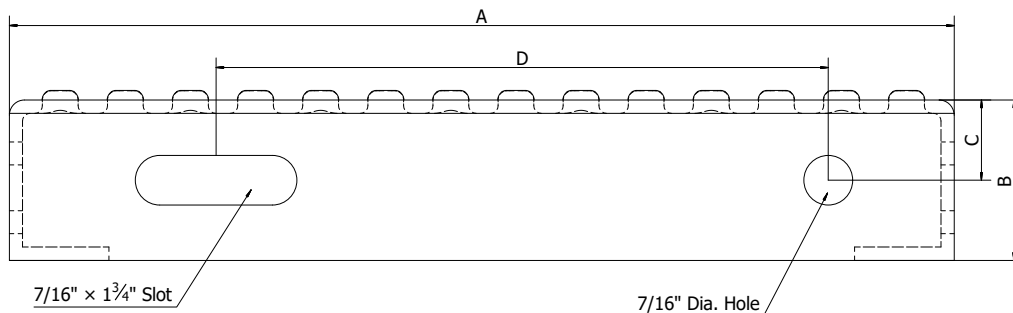
Load Table of Traction Tread Plank (Large Hole) – 12" Width

U: uniform load (lb./ft.²) D=Deflection (in.)

Material Gauge	Channel Depth in. (mm)	Weight lb./lin. ft. (kg/m)	Catalog Number	Span																				
				2'	2.5'	3'	3.5'	4'	4.5'	5'	5.5'	6'	6.5'	7"	7.5'	8'	9'	10'	11'	12'				
Steel 13 ga.	1-1/2 (38.1)	4.93 (7.33)	QT-PS-121513	U	544	445	322	232	170	133	104	95	84	61	45									
				D	0.02	0.04	0.06	0.08	0.10	0.13	0.15	0.20	0.25	0.25	0.25									
	2 (50.8)	5.24 (7.80)	QT-PS-122013	U	1101	902	652	469	344	268	211	192	170	123	92	70	54							
				D	0.02	0.04	0.06	0.08	0.10	0.13	0.15	0.20	0.25	0.25	0.25	0.25	0.25	0.25						
	3 (76.2)	5.57 (8.29)	QT-PS-123013	U	2986	2446	1769	1273	933	728	573	522	461	335	249	189	146	91	60	41	29			
				D	0.02	0.04	0.06	0.08	0.10	0.13	0.15	0.20	0.25	0.25	0.25	0.25	0.25	0.25	0.25	0.25	0.25	0.25		
Steel 11 ga.	1 1/2 (38.1)	6.90 (10.27)	QT-PS-121511	U	682	559	404	291	213	166	131	119	105	76	57									
				D	0.02	0.04	0.06	0.08	0.10	0.13	0.15	0.20	0.25	0.25	0.25									
	2 (50.8)	7.30 (10.86)	QT-PS-122011	U	1395	1143	827	595	436	340	268	244	215	156	116	88	68							
				D	0.02	0.04	0.06	0.08	0.10	0.13	0.15	0.20	0.25	0.25	0.25	0.25	0.25							
	3 (76.2)	8.23 (12.25)	QT-PS-123011	U	3831	3138	2270	1634	1197	934	736	670	591	429	319	242	187	117	77	52	37			
				D	0.02	0.04	0.06	0.08	0.10	0.13	0.15	0.20	0.25	0.25	0.25	0.25	0.25	0.25	0.25	0.25	0.25	0.25		
Alum 0.125"	1-1/2 (38.1)	2.37 (3.52)	QT-PA-1215125	U	238	195	141	101	74	58	46	42	37	27	20									
				D	0.02	0.04	0.06	0.08	0.10	0.13	0.15	0.20	0.25	0.25	0.25									
	2 (50.8)	2.52 (3.75)	QT-PA-1220125	U	487	399	288	207	152	119	93	85	75	55	41	31	24							
				D	0.02	0.04	0.06	0.08	0.10	0.13	0.15	0.20	0.25	0.25	0.25	0.25	0.25							



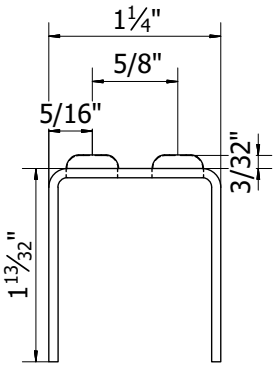
Traction Tread Stair Tread



Specification of Traction Tread Stair Tread

Width		A		B		C		D	
inch	mm	inch	mm	inch	mm	inch	mm	inch	mm
7	178	6-15/16	176	1-1/2	38	3/4	19	4	102
				2	51	1	25	4	102
10	254	9-15/16	252	1-1/2	38	3/4	19	7	178
				2	51	1	25	7	178
12	305	11-15/16	303	1-1/2	38	3/4	19	9	227
				2	51	1	25	9	227
12	305	11-15/16	303	1-1/2	38	3/4	19	9	227
				2	51	1	25	9	227

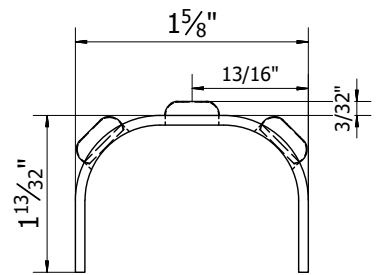
Traction Tread Ladder Rungs



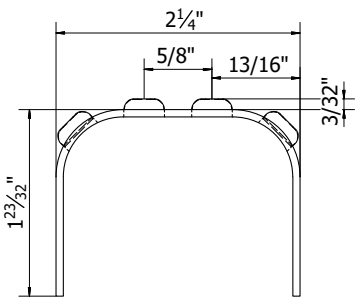
2-hole ladder rungs

Specification of 2-Hole Traction Tread Ladder Rungs				
Material	Thickness	Safe Allowable Concentrated Load (Lbs.)		Weight lbs./lin. ft.
		48-3/4" Span	60" Span	
Steel	11 gauge	515	383	1.52
Steel	13 gauge	328	252	1.18
Aluminum	0.125"	207	187	0.56
Stainless steel	16 gauge	218	183	0.82

Specification of 3-Hole Traction Tread Ladder Rungs				
Material	Thickness	Safe Allowable Concentrated Load (Lbs.)		Weight lbs./lin. ft.
		48-3/4" Span	60" Span	
Steel	11 gauge	297	229	1.46
Steel	13 gauge	187	151	1.06
Aluminum	0.125"	163	135	0.50
Stainless steel	16 gauge	151	103	0.73



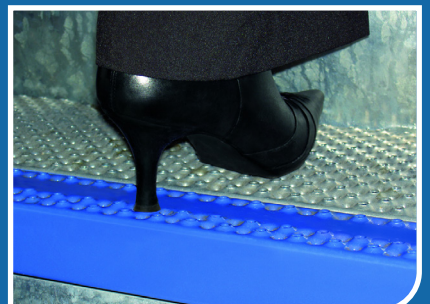
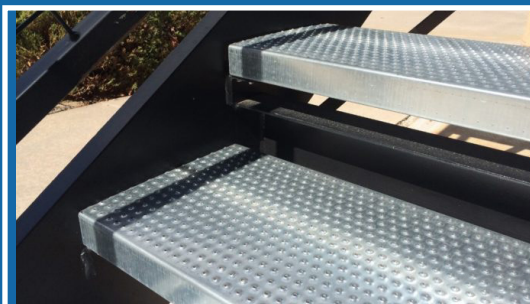
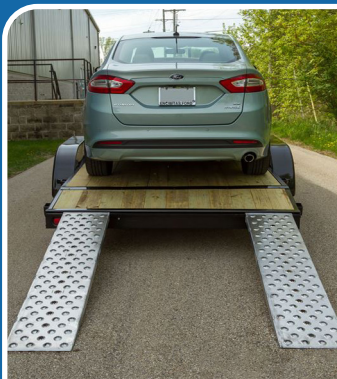
3-hole ladder rungs

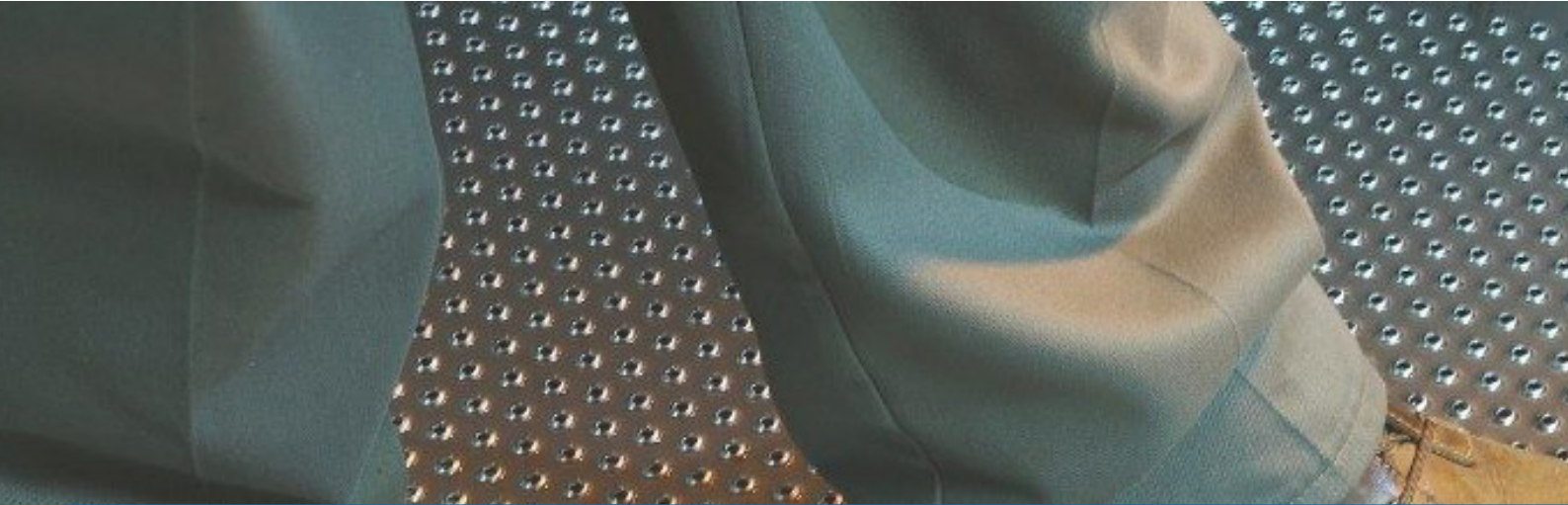


4-hole ladder rungs

Specification of 4-Hole Traction Tread Ladder Rungs				
Material	Thickness	Safe Allowable Concentrated Load (Lbs.)		Weight lbs./lin. ft.
		48-3/4" Span	60" Span	
Steel	11 gauge	523	408	2.08
Steel	13 gauge	372	274	1.49
Aluminum	0.125"	280	248	0.70
Stainless steel	16 gauge	236	201	1.03

Application





Company: Hebei Qiusuo Wire Mesh Products Co., Ltd.

Address: Wire Mesh Industrial Development Zone, Anping, Hebei, China. 053600

Tel: +86-18703384586(WhatsApp)

Email: sales@qs-wiremesh.com sandy@qs-wiremesh.com

Website: www.qs-wiremesh.com

