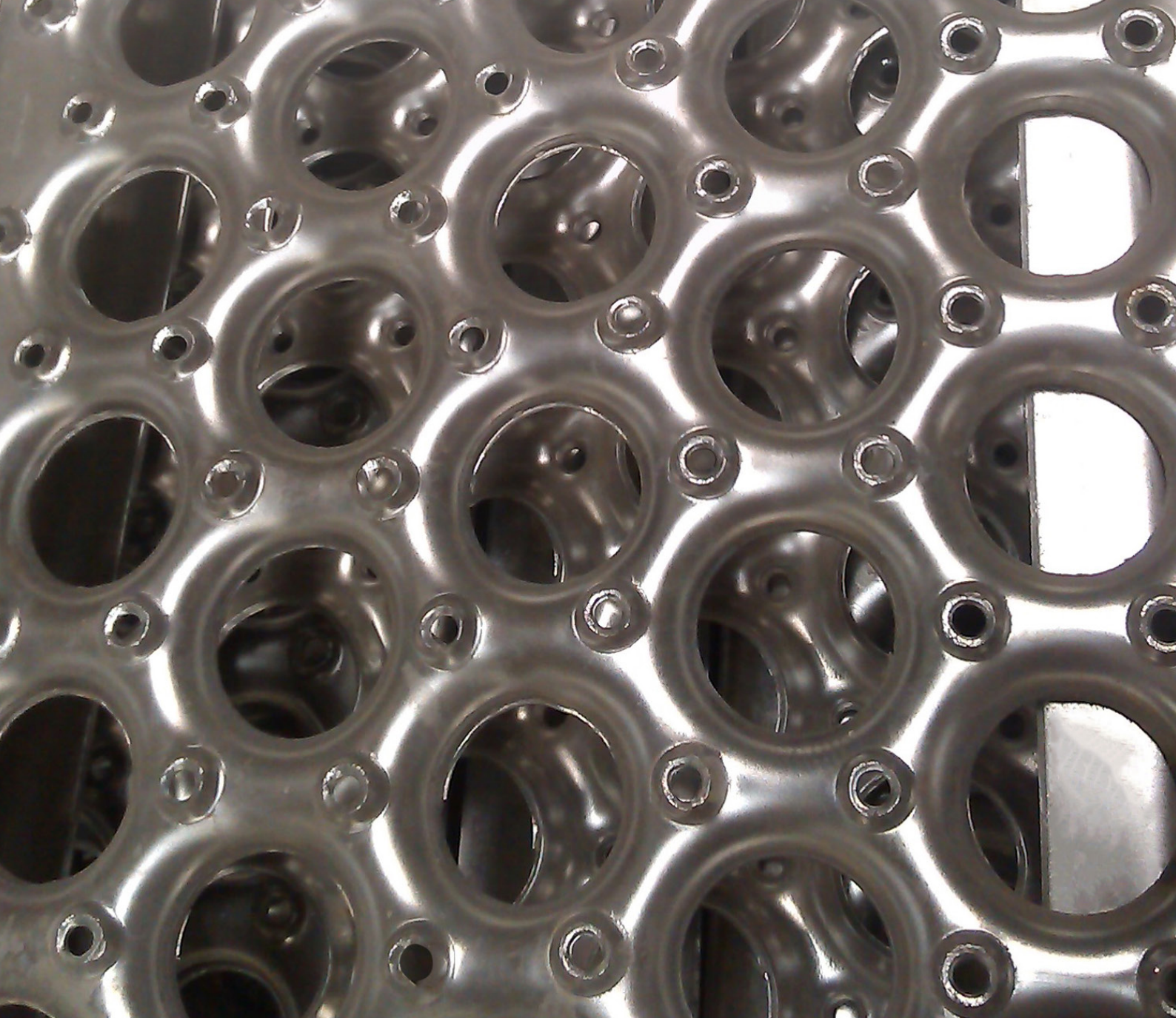
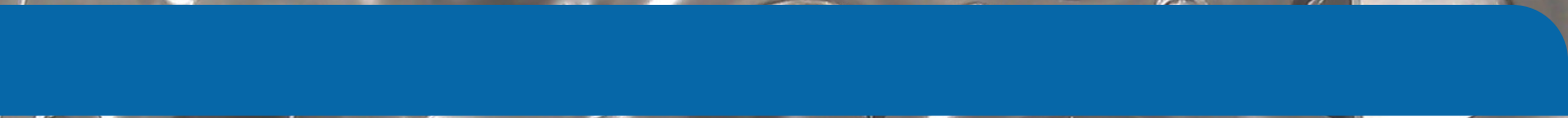




# O-Grip Safety Grating





## ABOUT QIUSUO

**Hebei Qiusuo Wire Mesh Products Co., Ltd.**, located in Anping , Hebei, China, is a professional perforated safety grating manufacturer, which was founded in 1998. The widest perforated metal safety grating products ranging from Perf O-grip safety grating, grip-strut safety grating, traction thread safety grating and interlocking safety grating.

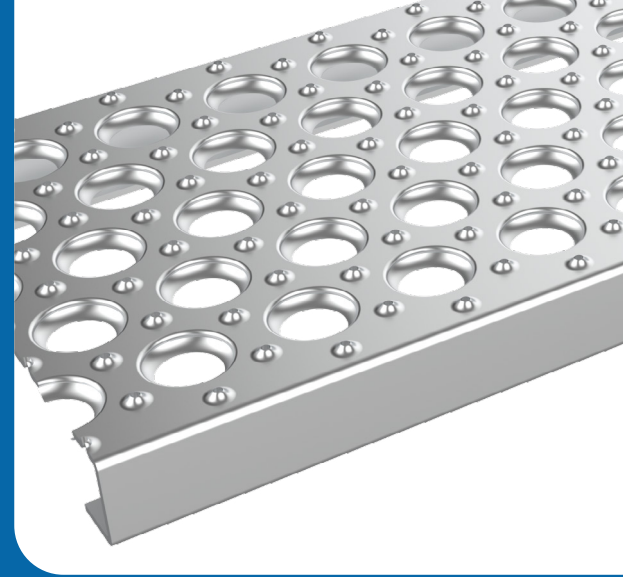
As a manufacturing and trading combo, we own workshops of punching, laser cutting, metal expanding, welding and quality inspection department. As a result of our high quality products and outstanding customer service, we have gained a global sales network reaching to the USA, Middle-East, Europe and Africa etc.

Just send us your drawing and picture,we can individually tailored solutions for every customer. We have 10 experienced foreign trade sales staff in our sales department. They can answer and resolve all your problems and we aim to serve more customers and supply more tailored solutions for every customer.

# CONTENTS

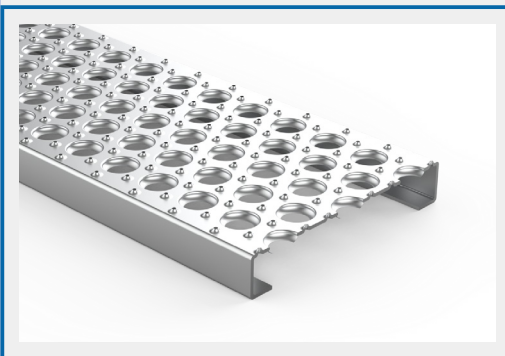


- 04** Introduction & Styles
- 05** Key Parameter
- 05** How to Order
- 06** Safe Loading Tables
- 13** Accessories for Standard O-Grip Safety Grating
- 14** Application



## INTRODUCTION & STYLES

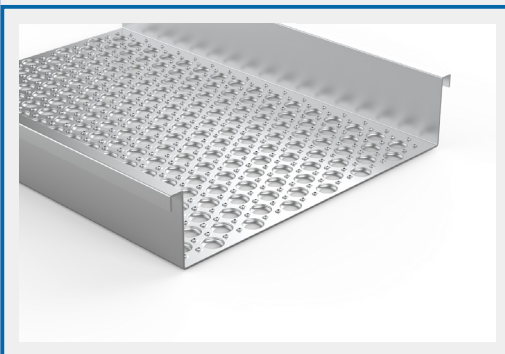
**Perf O-grip safety gratings** is characterized by the large de-bossed holes on the surface. It has an opening area of at least 37%. These rounded-edge holes are self-cleaning for dry, greasy, muddy, soapy and icy surface conditions and anti-slip in every direction. In fact, we can perceive it as a derivative product of perforated sheet. The resilient surface cushions the impact of footfalls and makes walking comfortable.



### Plank

Width: 5" (2-hole), 7" (3-hole), 10" (5-hole), 12" (6-hole),  
18" (10-hole), 24" (13-hole), 30" (16-hole).

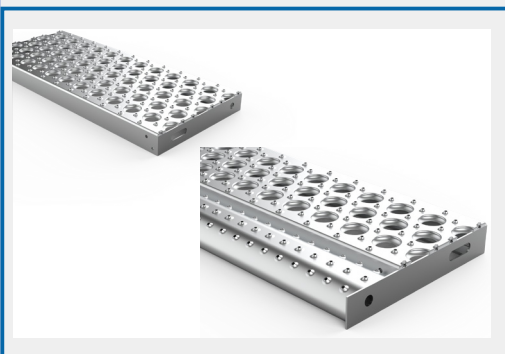
Channel Depth: • 11 gauge: 1-1/2", 2", 3".  
• 13 gauge: 1-1/2", 2".



### Walkway

Width: 24" (13-hole), 30" (16-hole), 36" (20-hole)

Channel Depth: 5"



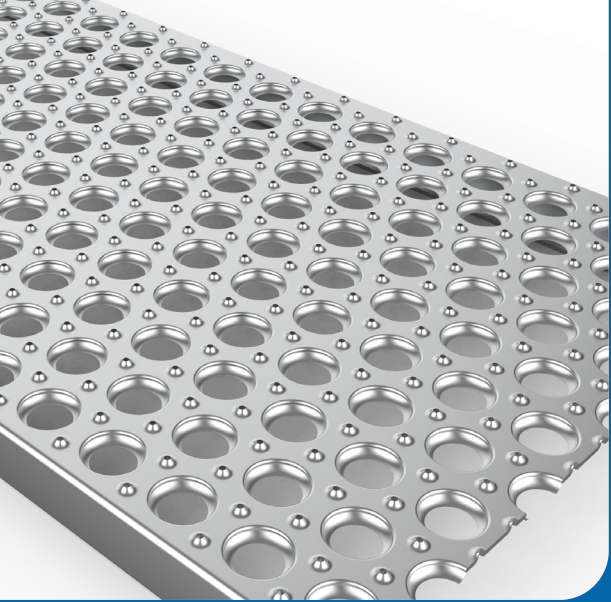
### Stair Treads

Types: standard or stair treads with nosing.

Length: 24", 30", 36"

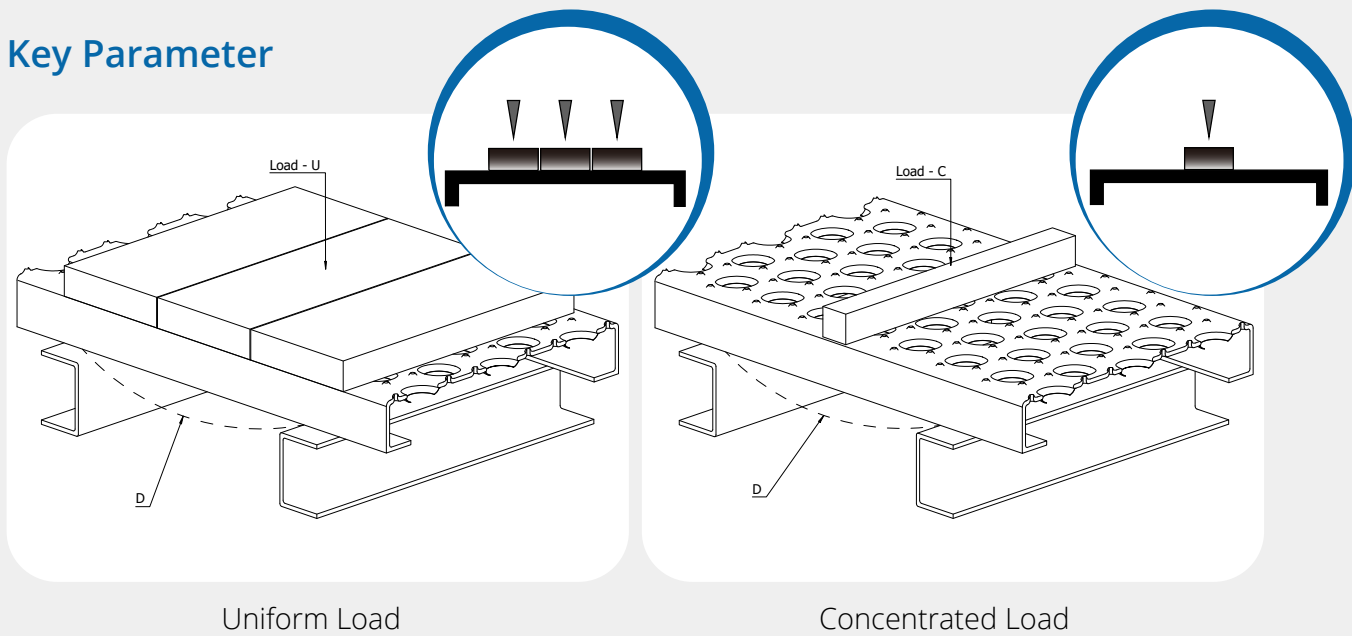
Nominal Width: 5" (2-hole), 7" (3-hole), 10" (5-hole), 12" (6-hole).

Channel Depth: 1-1/2", 2".



## PERF O-GRIP SAFETY GRATINGS

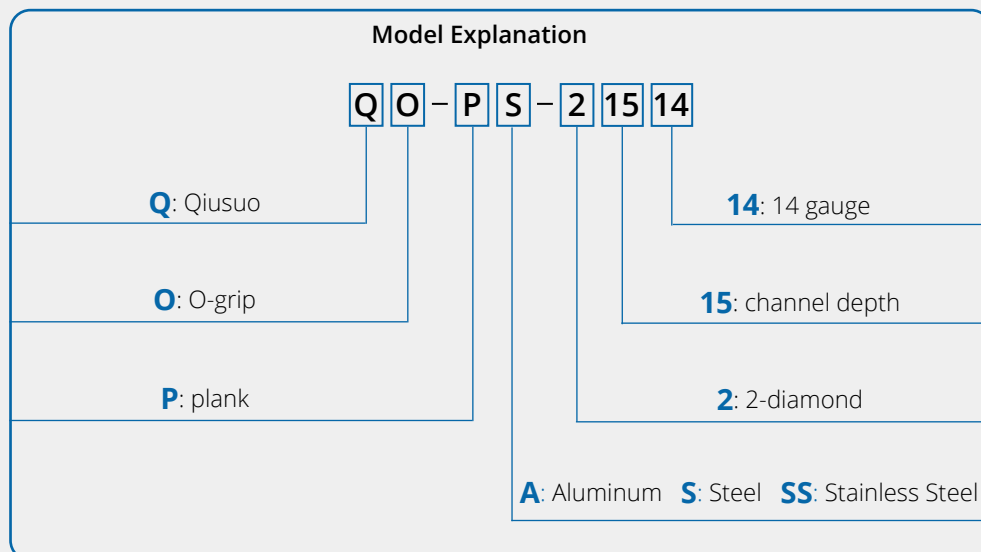
### Key Parameter



Uniform Load

Concentrated Load

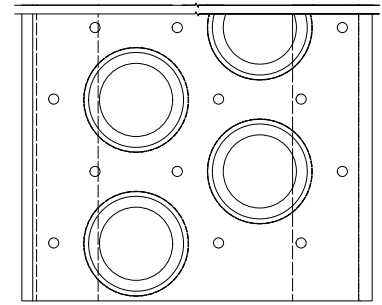
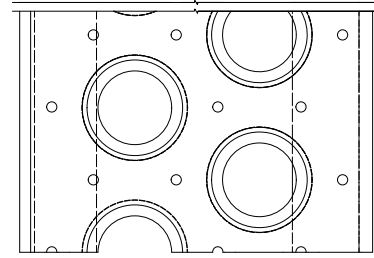
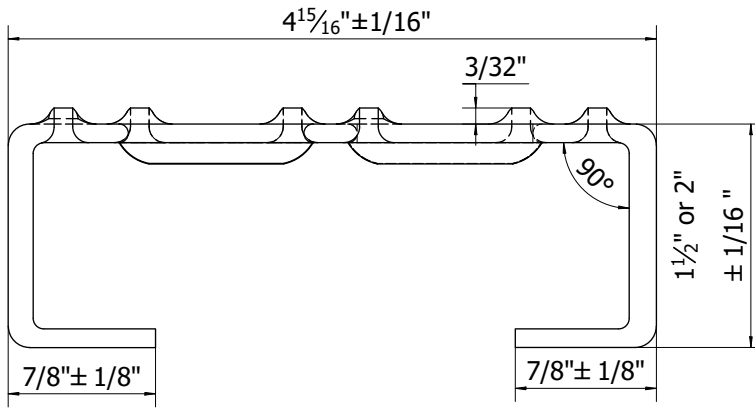
### How to order



The following are **Safe Loading Tables** of parameters for different purposes.



## O-Grip Safety Grating Plank 2-Hole plank

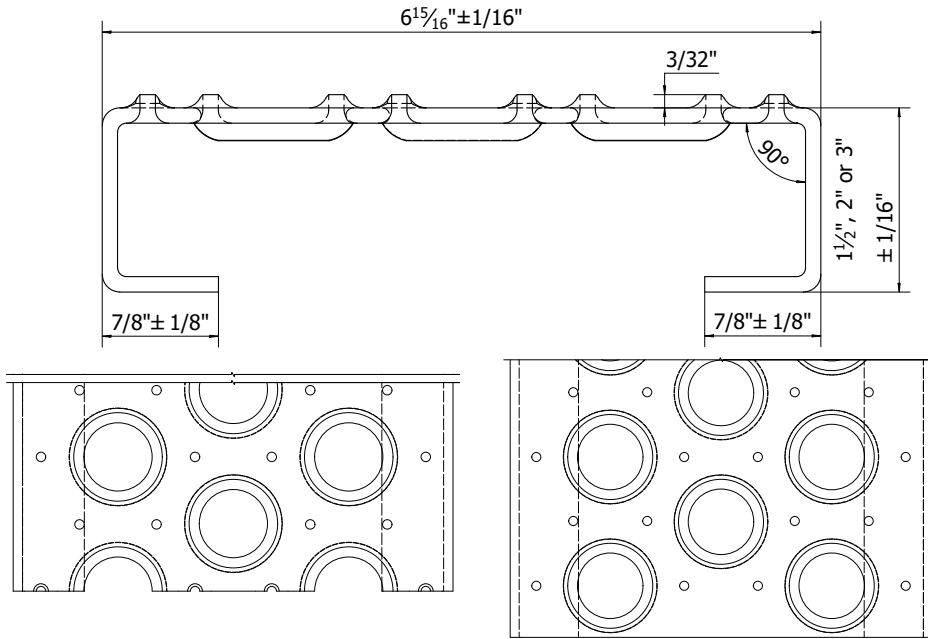
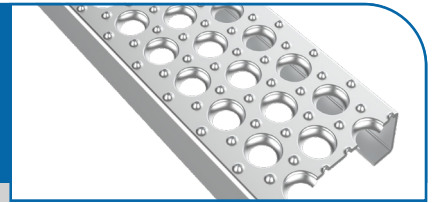


Load Table of 2-Hole Plank – 5" Width

U: uniform load (lb./ft.<sup>2</sup>)      C: concentrated load (lb.)      D=Deflection (in.)

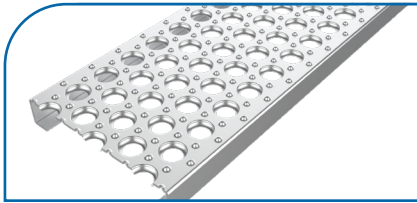
Material Gauge	Channel Depth in. (mm)	Weight lb./lin. ft. (kg/m)	Catalog Number	Span																
				2'	2.5'	3'	3.5'	4'	4.5'	5'	5.5'	6'	6.5'	7"	7.5'	8'	9'	10'	11'	12'
Steel 13 ga.	1-1/2 (38.1)	2.6 (3.8)	<b>QO-PS-21513</b>	U 2008	1287	895	659	505	400	325	269	227	194	168	146	130	103	85	70	60
				D 0.05	0.08	0.11	0.15	0.20	0.25	0.31	0.38	0.45	0.53	0.62	0.71	0.82	1.04	1.30	1.57	1.90
				C 836	670	559	481	421	375	338	308	284	263	244	229	216	194	176	162	150
				D 0.04	0.06	0.09	0.12	0.16	0.20	0.25	0.30	0.35	0.43	0.49	0.57	0.65	0.83	1.04	1.27	1.52
	2 (50.8)	2.8 (4.1)	<b>QO-PS-22013</b>	U 3035	1944	1352	994	762	603	490	405	341	292	253	221	194	155	126	105	89
				D 0.04	0.06	0.09	0.12	0.15	0.19	0.24	0.29	0.34	0.41	0.47	0.54	0.62	0.79	0.98	1.20	1.43
				C 1228	1003	845	725	635	566	510	465	427	395	368	344	324	290	263	240	223
				D 0.03	0.05	0.07	0.09	0.12	0.15	0.19	0.23	0.28	0.32	0.38	0.43	0.50	0.63	0.79	.96	1.15
Alum. 0.125"	2 (50.8)	1.3 (1.9)	<b>QO-PA-220125</b>	U 2910	1863	1294	950	728	575	466	385	323	276	237	207	182	143	116	96	81
				D 0.08	0.12	0.18	0.24	0.32	0.40	0.50	0.60	0.72	0.84	0.98						
				C 1213	970	809	693	606	539	485	441	404	373	346	323	303	270	243	221	202
				D 0.06	0.10	0.14	0.20	0.25	0.32	0.40	0.48	0.57	0.67	0.78	0.90	1.02	1.29	1.60	1.93	2.29
Stainless Steel 16 ga.	2 (50.8)	2.1 (3.1)	<b>QO-PSS-22016</b>	U 2781	2049	1422	1046	800	632	512	424	355	303	262	227	200	159	128	106	89
				D 0.05	0.08	0.12	0.16	0.21	0.26	0.32	0.39	0.46	0.54	0.63	0.72	0.82	1.04	1.28	1.56	1.85
				C 1334	1066	889	761	666	593	534	485	445	410	381	355	334	296	267	243	223
				D 0.04	0.06	0.09	0.13	0.16	0.21	0.26	0.31	0.37	0.43	0.50	0.58	0.66	0.83	1.03	1.25	1.48
Stainless Steel 14 ga.	2 (50.8)	2.1 (3.1)	<b>QO-PSS-22014</b>	U 3684	2410	1673	1230	942	744	602	498	418	357	307	267	235	186	151	125	105
				D 0.06	0.08	0.13	0.17	0.22	0.27	0.34	0.41	0.49	0.57	0.66	0.77	0.87	1.10	1.36	1.65	1.95
				C 1569	1255	1046	896	784	697	627	570	523	482	448	418	392	349	314	286	262
				D 0.05	0.07	0.10	0.14	0.17	0.22	0.27	0.33	0.39	0.46	0.54	0.61	0.70	0.88	1.09	1.31	1.57

# O-Grip Safety Grating Plank 3-Hole plank

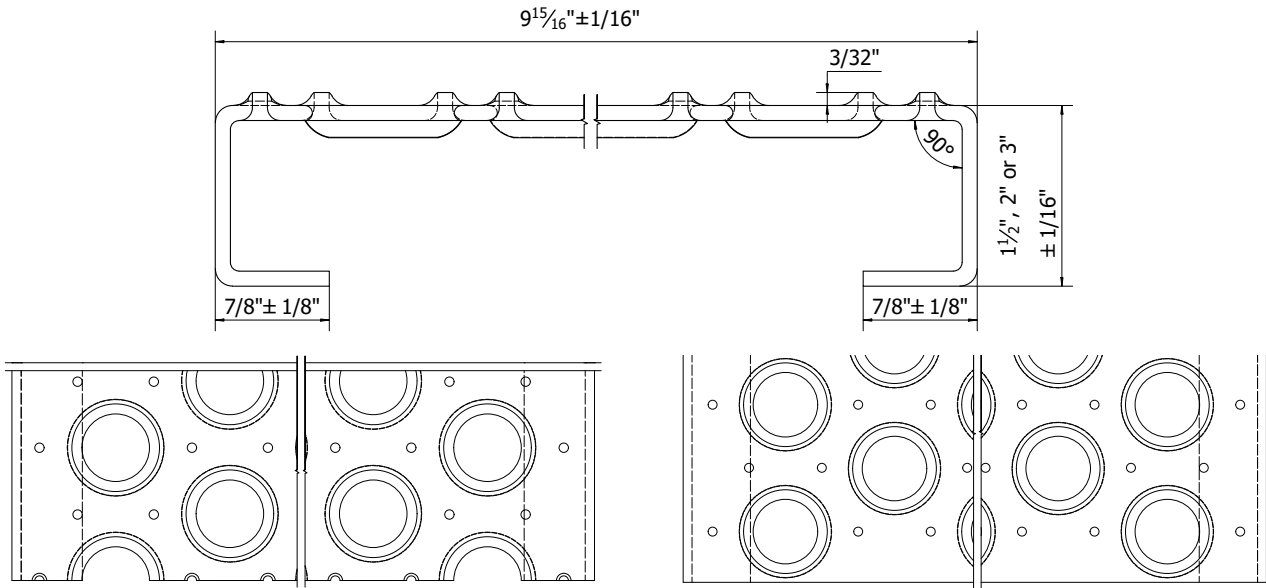


Load Table of 3-Hole Plank – 7" Width

U: uniform load (lb./ft. <sup>2</sup> )		C: concentrated load (lb.)		D=Deflection (in.)		Span																		
Material Gauge	Channel Depth in. (mm)	Weight lb./lin. ft. (kg/m)	Catalog Number	2'	2.5'	3'	3.5'	4'	4.5'	5'	5.5'	6'	6.5'	7"	7.5'	8'	9'	10'	11'	12'				
Steel 13 ga.	1-1/2 (38.1)	3.0 (4.4)	<b>QO-PS-31513</b>	U	1536	984	685	504	387	306	249	206	174	149	129	112	100	79	65	55	46			
				D	0.05	0.07	0.11	0.14	0.19	0.24	0.29	0.36	0.43	0.50	0.58	0.67	0.77	0.98						
				C	914	731	609	522	457	406	366	332	305	283	263	246	232	208	190	174	162			
				D	0.04	0.06	0.08	0.12	0.15	0.19	0.24	0.29	0.34	0.40	0.47	0.54	0.61	0.78	0.98	1.20	1.44			
	2 (50.8)	3.3 (4.9)	<b>QO-PS-32013</b>	U	1965	1473	1024	754	578	458	371	307	259	222	192	167	147	118	96	80	68			
				D	0.03	0.06	0.08	0.11	0.14	0.18	0.23	0.27	0.33	0.38	0.44	0.51	0.58	0.74	0.92	1.13	1.36			
				C	1369	1096	913	783	685	609	548	498	456	421	391	366	344	308	279	257	237			
				D	0.03	0.05	0.07	0.09	0.12	0.15	0.18	0.22	0.26	0.31	0.35	0.41	0.47	0.59	0.74	0.90	1.08			
	Steel 11 ga.	1-1/2 (38.1)	4.2 (6.2)	<b>QO-PS-31511</b>	U	1981	1269	883	650	498	394	320	265	224	191	165	144	128	101	83	69	59		
					D	0.05	0.07	0.11	0.15	0.19	0.24	0.30	0.36	0.43	0.51	0.59	0.68	0.78	0.98	1.22	1.50	1.81		
					C	1165	932	777	666	582	518	467	426	391	362	337	316	297	266	241	222	205		
					D	0.04	0.06	0.09	0.12	0.15	0.19	0.24	0.29	0.34	0.40	0.47	0.54	0.62	0.79	0.98	1.20	1.44		
2 (50.8)		4.5 (6.7)	<b>QO-PS-32011</b>	U	2899	1978	1375	1012	776	614	498	411	347	302	261	228	201	160	130	108	92			
				D	0.03	0.06	0.08	0.11	0.15	0.19	0.23	0.28	0.34	0.40	0.47	0.54	0.62	0.78	0.97	1.18	1.42			
				C	1762	1440	1175	1032	904	805	726	661	607	573	533	499	469	420	380	348	321			
				D	0.03	0.05	0.07	0.09	0.12	0.15	0.19	0.23	0.27	0.32	0.37	0.43	0.49	0.63	0.78	0.95	1.14			
3 (76.2)		4.8 (7.1)	<b>QO-PS-33011</b>	U	5806	3716	2581	1898	1454	1150	932	771	649	554	479	417	367	291	236	196	166			
				D	0.03	0.04	0.06	0.08	0.11	0.13	0.17	0.20	0.24	0.28	0.33	0.37	0.43	0.54	0.67	0.81	0.98			
				C	3188	2550	2125	1822	1594	1417	1275	1159	1132	1050	976	913	857	764	690	630	581			
				D	0.02	0.03	0.04	0.06	0.07	0.10	0.12	0.15	0.19	0.22	0.26	0.30	0.34	0.43	0.54	0.65	0.78			
Alum. 0.125"	2 (50.8)	1.5 (2.2)	<b>QO-PA-320125</b>	U	2138	1491	1035	761	582	460	372	308	258	221	190	166	146	115	93	77	65			
				D	0.07	0.14	0.20	0.27	0.35	0.44	0.54	0.66	0.78	0.92	1.07	1.23	1.39	1.76	2.18	2.64	3.14			
				C	1509	1207	1006	862	755	671	604	549	503	464	431	402	377	335	302	274	252			
				D	0.07	0.11	0.16	0.21	0.28	0.35	0.44	0.53	0.63	0.74	.85	.98	1.12	1.41	1.74	2.11	2.51			
Stainless Steel 16 ga.	2 (50.8)	2.4 (3.6)	<b>QO-PSS-32016</b>	U	1419	1399	971	714	546	432	350	289	243	207	178	155	137	107	88	72	61			
				D	0.03	0.07	0.10	0.13	0.17	0.22	0.27	0.33	0.39	0.46	0.53	0.61	0.70	0.88	1.09	1.31	1.56			
				C	1275	1021	850	729	638	567	510	464	425	392	365	341	319	283	255	232	213			
				D	0.03	0.05	0.08	0.11	0.14	0.18	0.22	0.26	0.31	0.37	0.43	0.49	0.56	0.70	0.87	1.05	1.25			
Stainless Steel 14 ga.	2 (50.8)	2.8 (4.1)	<b>QO-PSS-32014</b>	U	1879	1571	1091	801	614	485	393	325	273	232	200	175	153	121	98	81	69			
				D	0.04	0.07	0.10	0.14	0.18	0.22	0.27	0.33	0.40	0.47	0.54	0.62	0.70	0.89	1.10	1.33	1.59			
				C	1432	1145	954	818	715	637	573	521	478	440	409	382	358	318	287	261	239			
				D	0.04	0.06	0.08	0.11	0.14	0.18	0.22	0.27	0.32	0.37	0.43	0.49	0.56	0.71	0.88	1.06	1.27			



# O-Grip Safety Grating Plank 5-Hole plank



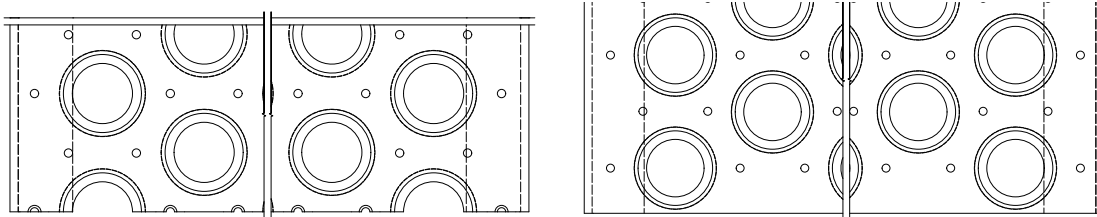
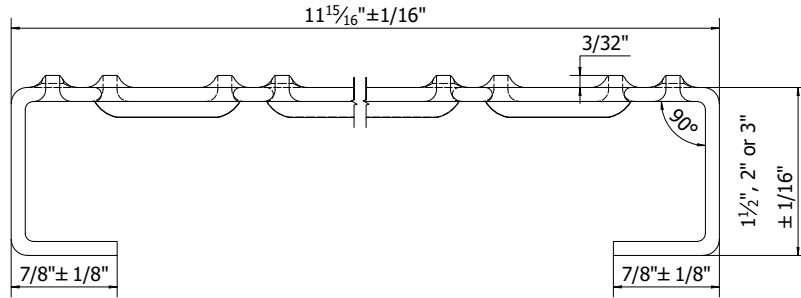
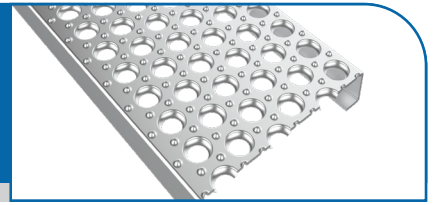
Load Table of 5-Hole Plank – 10" Width

U: uniform load (lb./ft.<sup>2</sup>)      C: concentrated load (lb.)      D=Deflection (in.)

Material Gauge	Channel Depth in. (mm)	Weight lb./lin. ft. (kg/m)	Catalog Number	Span																	
				2'	2.5'	3'	3.5'	4'	4.5'	5'	5.5'	6'	6.5'	7"	7.5'	8'	9'	10'	11'	12'	
Steel 13 ga.	1-1/2 (38.1)	3.5 (5.2)	<b>QO-PS -51513</b>	U	963	745	517	380	291	230	187	154	129	110	95	83	73	58	46	38	32
				D	0.04	0.08	0.11	0.15	0.19	0.24	0.30	0.36	0.43	0.51	0.59	0.67	0.77	0.98	1.20	1.44	1.71
				C	855	684	645	554	485	431	388	353	323	298	277	259	242	216	191	176	162
				D	0.03	0.05	0.09	0.12	0.15	0.19	0.24	0.29	0.35	0.41	0.47	0.54	0.61	0.78	0.95	1.16	1.39
				U	1735	1110	771	568	435	344	281	232	196	167	144	126	110	88	70	60	50
				D	0.04	0.06	0.08	0.11	0.15	0.18	0.23	0.28	0.33	0.39	0.45	0.52	0.59	0.75	0.91	1.14	1.34
	2 (50.8)	3.9 (5.8)	<b>QO-PS -52013</b>	C	1297	1038	865	741	648	645	584	532	489	453	422	392	368	327	297	267	245
				D	0.02	0.04	0.05	0.08	0.10	0.15	0.18	0.22	0.26	0.31	0.36	0.41	0.47	0.60	0.79	0.89	1.06
				U	1385	888	618	455	349	276	225	186	157	134	117	101	90	71	59	48	41
				D	0.05	0.07	0.10	0.14	0.18	0.23	0.29	0.35	0.41	0.49	0.57	0.65	0.75	0.95	1.20	1.45	1.74
				C	1086	888	772	663	582	518	467	426	392	363	338	318	299	268	244	225	205
				D	0.03	0.05	0.08	0.11	0.15	0.18	0.23	0.28	0.33	0.39	0.45	0.52	0.60	0.76	0.96	1.17	1.39
Steel 11 ga.	1-1/2 (38.1)	4.5 (6.7)	<b>QO-PS -51511</b>	U	2261	1447	1005	739	567	449	364	300	253	216	186	162	142	112	91	75	63
				D	0.04	0.06	0.08	0.11	0.15	0.19	0.23	0.28	0.33	0.39	0.45	0.52	0.59	0.75	0.92	1.12	1.32
				C	1670	1336	1113	954	888	823	758	689	631	583	541	505	473	421	378	344	316
				D	0.02	0.04	0.06	0.08	0.11	0.14	0.18	0.22	0.27	0.31	0.36	0.42	0.47	0.60	0.74	0.89	1.06
				U	4214	2697	1873	1376	1053	832	674	557	468	399	344	300	263	208	168	139	117
				D	0.03	0.04	0.06	0.08	0.10	0.13	0.16	0.19	0.23	0.27	0.31	0.35	0.41	0.52	0.64	0.77	0.92
	2 (50.8)	5.1 (5.6)	<b>QO-PS -52011</b>	C	3095	2476	2064	1769	1548	1376	1238	1126	1032	952	927	902	878	781	702	638	585
				D	0.02	0.03	0.04	0.05	0.07	0.08	0.11	0.14	0.16	0.19	0.24	0.28	0.33	0.41	0.51	0.62	0.74
				U	1048	1022	710	522	400	316	256	212	178	153	131	115	101	80	65	54	46
				D	0.05	0.12	0.18	0.24	0.31	0.40	0.49	0.59	0.71	0.83	0.96	1.10	1.26	1.59	1.96	2.37	2.83
				C	1431	1145	954	818	715	636	572	520	477	440	409	382	358	318	286	260	238
				D	0.06	0.09	0.13	0.19	0.25	0.32	0.39	0.47	0.57	0.66	0.77	0.88	1.00	1.27	1.57	1.90	2.26
Stainless Steel 16 ga.	2 (50.8)	2.7 (4.0)	<b>QO-PSS -52016</b>	U	1418	907	630	463	354	280	226	187	158	134	115	101	88	70	57	47	39
				D	0.04	0.07	0.10	0.13	0.17	0.21	0.26	0.32	0.38	0.44	0.52	0.59	0.67	0.85	1.06	1.28	1.50
				C	1148	918	765	656	574	510	459	430	393	363	337	315	295	263	237	215	197
				D	0.03	0.05	0.07	0.10	0.13	0.17	0.21	0.26	0.30	0.36	0.41	0.48	0.54	0.69	0.85	1.02	1.22
				U	1296	1037	864	741	648	576	530	485	445	410	381	355	334	296	266	242	222
				D	0.04	0.07	0.10	0.13	0.17	0.22	0.27	0.32	0.38	0.45	0.52	0.60	0.68	0.86	1.07	1.28	1.54
Stainless Steel 14 ga.	2 (50.8)	3.2 (4.7)	<b>QO-PSS -52014</b>	C	1296	1037	864	741	648	576	530	485	445	410	381	355	334	296	266	242	222
				D	0.03	0.05	0.07	0.10	0.13	0.17	0.21	0.26	0.31	0.36	0.42	0.48	0.55	0.69	0.85	1.03	1.22

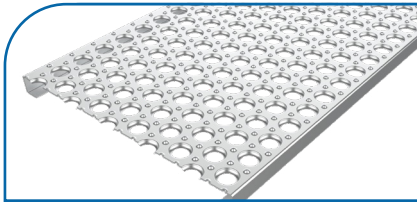


# O-Grip Safety Grating Plank 6-Hole plank

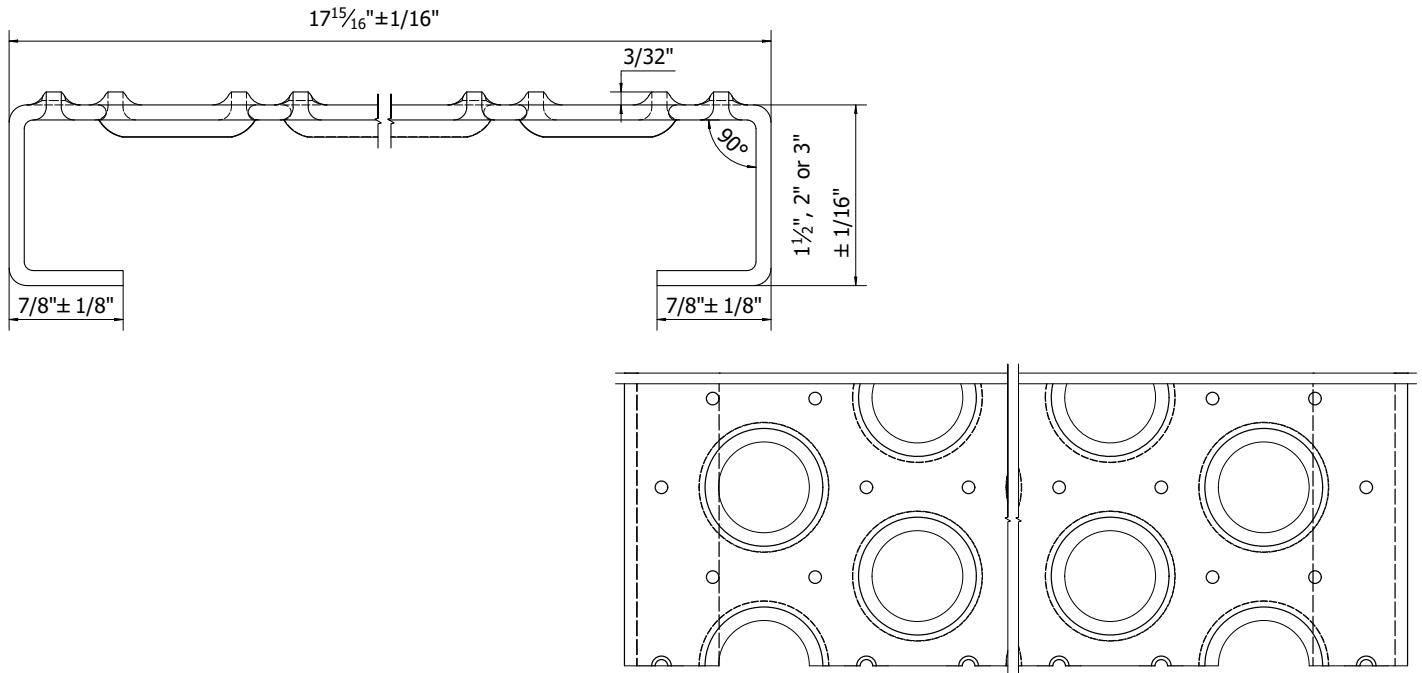


### Load Table of 6-Hole Plank – 12" Width

U: uniform load (lb./ft. <sup>2</sup> )		C: concentrated load (lb.)		D=Deflection (in.)		Span																		
Material Gauge	Channel Depth in. (mm)	Weight lb./lin. ft. (kg/m)	Catalog Number	2'	2.5'	3'	3.5'	4'	4.5'	5'	5.5'	6'	6.5'	7'	7.5'	8'	9'	10'	11'	12'				
Steel 13 ga.	1-1/2 (38.1)	4.3 (6.4)	<b>QO-PS -61513</b>	U	669	655	456	336	258	204	166	138	117	100	87	76	67	54	44	37	31			
				D	0.03	0.07	0.10	0.13	0.17	0.22	0.27	0.33	0.40	0.47	0.55	0.63	0.72	0.92	1.16	1.43	1.68			
				C	960	819	684	588	516	460	416	380	349	325	303	285	268	241	218	198	182			
			2 (50.8)	4.6 (6.8)	<b>QO-PS -61513</b>	U	1510	966	671	493	378	299	243	201	170	145	126	110	97	77	63	53	45	
						D	0.03	0.05	0.07	0.10	0.13	0.16	0.20	0.25	0.29	0.35	0.40	0.46	0.53	0.68	0.85	1.03	1.25	
						C	1442	1154	961	862	756	673	608	555	509	472	440	413	388	349	317	291	270	
	Steel 11 ga.	1-1/2 (38.1)	5.3 (7.9)	<b>QO-PS -61511</b>	U	986	739	515	378	291	230	188	156	131	112	97	85	75	60	50	41	35		
					D	0.03	0.06	0.09	0.12	0.16	0.21	0.25	0.31	0.37	0.43	0.50	0.57	0.65	0.82	1.02	1.25	1.50		
					C	1231	985	821	703	615	547	492	448	410	379	352	328	308	274	246	227	210		
				2 (50.8)	5.5 (8.2)	<b>QO-PS -62011</b>	U	1937	1240	861	633	486	385	312	259	218	186	161	140	124	99	80	67	57
							D	0.03	0.05	0.07	0.10	0.13	0.16	0.20	0.24	0.29	0.34	0.40	0.46	0.52	0.67	0.83	1.01	1.22
							C	1881	1505	1292	1109	971	865	781	712	654	604	563	527	496	444	403	389	341
3 (76.2)		6.2 (9.2)	<b>QO-PS -63011</b>	U	3828	2450	1701	1250	957	757	614	507	427	365	315	274	242	192	156	130	108			
				D	0.02	0.04	0.05	0.07	0.10	0.12	0.15	0.18	0.22	0.25	0.29	0.34	0.39	0.49	0.61	0.74	0.87			
				C	3448	2759	2299	1971	1724	1553	1405	1396	1282	1185	1102	1130	968	864	781	714	652			
Alum. 0.125"		2 (50.8)	2.1 (3.1)	<b>QO-PA -61513</b>	U	1463	936	650	478	366	290	235	194	163	140	120	104	93	73	60	49	41		
					D	0.08	0.12	0.17	0.23	0.30	0.38	0.47	0.57	0.68	0.79	0.92	1.05	1.20	1.52	1.88	2.27	2.70		
					C	1612	1290	1075	921	806	716	645	586	537	496	461	430	403	358	322	293	269		
	Stainless Steel 16 ga.			2 (50.8)	3.2 (4.7)	<b>QO-PSS -62016</b>	U	1289	825	573	421	322	255	206	170	143	122	105	91	80	64	51	42	35
							D	0.04	0.07	0.10	0.13	0.17	0.22	0.27	0.33	0.39	0.46	0.53	0.61	0.69	0.88	1.08	1.30	1.54
							C	1252	1002	835	715	626	556	501	469	430	397	368	343	322	286	257	234	215
Stainless Steel 14 ga.	2 (50.8)	3.8 (5.6)	<b>QO-PSS -62014</b>	U	1455	931	647	475	365	288	233	193	162	138	119	104	82	65	54	46	39			
				D	0.04	0.07	0.10	0.13	0.17	0.21	0.26	0.32	0.38	0.44	0.51	0.59	0.65	0.83	1.02	1.23	1.47			
				C	1416	1133	944	809	708	629	583	529	486	448	416	389	365	323	291	265	242			



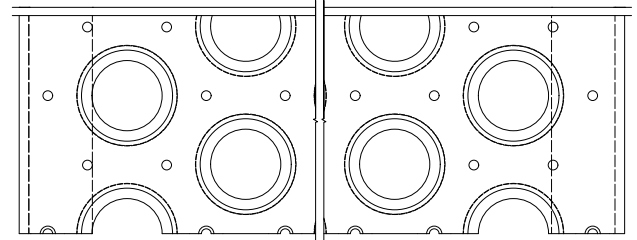
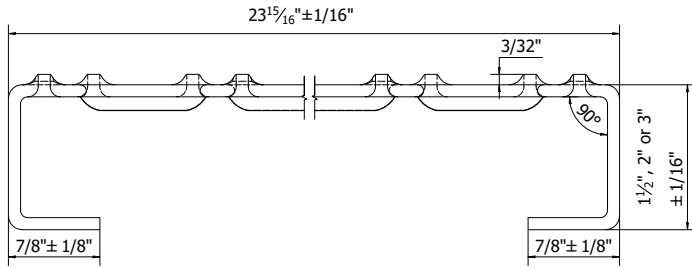
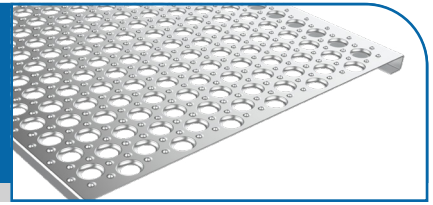
# O-Grip Safety Grating Plank 10-Hole plank



Load Table of 10-Hole Plank – 18" Width

U: uniform load (lb./ft. <sup>2</sup> )		C: concentrated load (lb.)		D=Deflection (in.)		Span															
Material Gauge	Channel Depth in. (mm)	Weight lb./lin. ft. (kg/m)	Catalog Number	2'	2.5'	3'	3.5'	4'	4.5'	5'	5.5'	6'	6.5'	7"	7.5'	8'	9'	10'	11'	12'	
Steel 13 ga.	1-1/2 (38.1)	5.7 (8.5)	QO-PS-101513	U	714	457	317	233	179	142	116	96	82	69	60	52	45	36	29	24	21
				D	0.04	0.07	0.10	0.13	0.17	0.21	0.26	0.32	0.39	0.45	0.52	0.60	0.68	0.86	1.05	1.27	1.56
				C	964	771	642	551	495	481	434	397	366	337	314	293	274	243	220	199	183
				D	0.03	0.04	0.07	0.09	0.12	0.17	0.21	0.26	0.31	0.36	0.42	0.48	0.55	0.69	0.85	1.03	1.23
	2 (50.8)	6.0 (8.9)	QO-PS-102013	U	1072	686	476	350	268	212	173	143	121	103	90	78	69	55	44	36	31
				D	0.03	0.05	0.07	0.10	0.13	0.16	0.20	0.24	0.29	0.34	0.40	0.46	0.53	0.67	0.82	0.98	1.19
				C	1452	1162	968	830	726	645	581	528	509	489	470	439	411	366	329	299	274
				D	0.02	0.03	0.05	0.06	0.09	0.12	0.14	0.17	0.22	0.27	0.32	0.37	0.42	0.53	0.65	0.79	0.94
Steel 11 ga.	1-1/2 (38.1)	6.8 (10.1)	QO-PS-101511	U	781	500	347	255	196	156	127	105	89	76	66	58	52	41	34	29	25
				D	0.04	0.06	0.09	0.12	0.15	0.19	0.24	0.29	0.34	0.40	0.47	0.53	0.61	0.77	0.96	1.20	1.45
				C	1257	1006	838	718	629	559	503	457	419	387	359	335	314	279	253	234	219
				D	0.03	0.05	0.07	0.09	0.12	0.15	0.19	0.23	0.27	0.32	0.37	0.43	0.49	0.62	0.76	0.94	1.14
	2 (50.8)	7.1 (10.5)	QO-PS-102011	U	1250	800	555	408	314	249	201	167	141	121	104	91	80	64	53	44	37
				D	0.03	0.05	0.07	0.09	0.12	0.15	0.18	0.22	0.26	0.31	0.35	0.41	0.46	0.59	0.74	0.91	1.08
				C	1924	1539	1283	1099	962	855	770	700	641	592	550	514	484	434	395	363	337
				D	0.02	0.04	0.05	0.07	0.09	0.12	0.14	0.17	0.21	0.24	0.28	0.33	0.37	0.48	0.59	0.73	0.87
	3 (76.2)	7.9 (11.7)	QO-PS-103011	U	2675	1712	1189	873	669	528	428	354	297	254	219	190	167	132	107	89	74
				D	0.02	0.04	0.05	0.07	0.09	0.11	0.14	0.17	0.20	0.24	0.28	0.31	0.36	0.45	0.56	0.68	0.81
				C	3531	2825	2354	2018	1766	1569	1412	1284	1177	1141	1106	1070	1003	892	802	730	669
				D	0.01	0.02	0.03	0.04	0.06	0.08	0.10	0.12	0.14	0.20	0.23	0.25	0.29	0.36	0.45	0.54	0.65
Alum. 0.125"	2 (50.8)	2.8 (4.1)	QO-PA-1020125	U	992	635	441	324	248	196	158	131	110	94	81	70	62	49	40	33	27
				D	0.07	0.10	0.16	0.21	0.28	0.35	0.44	0.53	0.63	0.74	0.86	0.98	1.12	1.42	1.75	2.11	2.52
				C	1652	1322	1102	944	826	734	661	601	551	508	472	441	413	367	330	300	275
				D	0.05	0.08	0.13	0.17	0.22	0.28	0.35	0.42	0.50	0.59	0.69	0.79	0.89	1.13	1.40	1.69	2.01

# O-Grip Safety Grating Plank 13-Hole plank

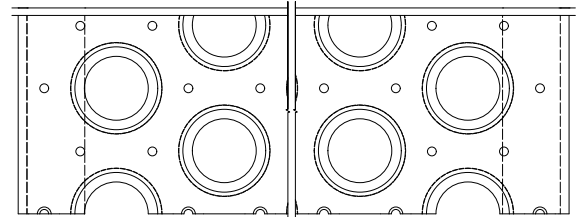
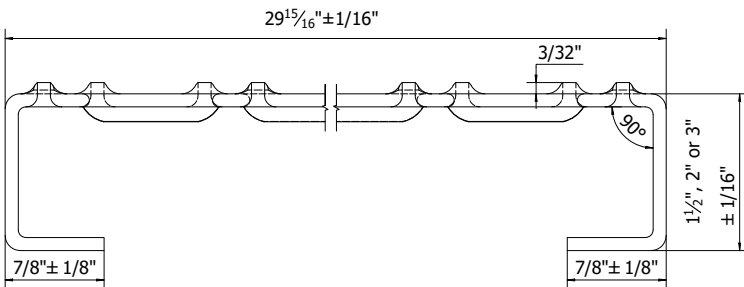
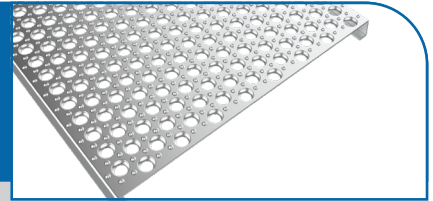


**Load Table of 13-Hole Plank – 24" Width**

U: uniform load (lb./ft.<sup>2</sup>)      C: concentrated load (lb.)      D=Deflection (in.)

Material Gauge	Channel Depth in. (mm)	Weight lb./lin. ft. (kg/m)	Catalog Number	Span																	
				2'	2.5'	3'	3.5'	4'	4.5'	5'	5.5'	6'	6.5'	7"	7.5'	8'	9'	10'	11'	12'	
Steel 11 ga.	1-1/2 (38.1)	4.3 (6.4)	<b>QO-PS-131511</b>	U	1094	700	486	357	273	216	175	145	123	105	91	79	70	56	45	38	33
				D	0.03	0.05	0.06	0.09	0.12	0.15	0.18	0.22	0.26	0.31	0.36	0.41	0.47	0.60	0.75	0.92	1.13
				C	2092	1674	1395	1196	1046	930	837	761	697	644	598	558	540	504	459	423	393
			<b>QO-PS-132011</b>	D	0.02	0.03	0.05	0.06	0.09	0.11	0.14	0.17	0.20	0.23	0.27	0.31	0.37	0.49	0.61	0.74	0.90
				U	1971	1261	876	644	493	389	315	261	219	187	161	141	124	99	80	67	57
				D	0.02	0.03	0.04	0.06	0.08	0.10	0.12	0.15	0.18	0.21	0.24	0.28	0.32	0.40	0.50	0.61	0.73
	2 (50.8)	4.6 (6.8)	<b>QO-PS-132011</b>	C	3792	3033	2528	2167	1896	1685	1517	1379	1264	1167	1083	1011	948	843	758	689	632
				D	0.01	0.02	0.03	0.04	0.05	0.07	0.09	0.10	0.12	0.15	0.17	0.19	0.22	0.30	0.38	0.46	0.54

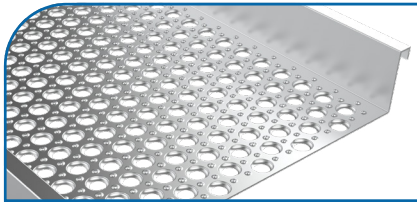
# O-Grip Safety Grating Plank 16-Hole plank



**Load Table of 16-Hole Plank – 30" Width**

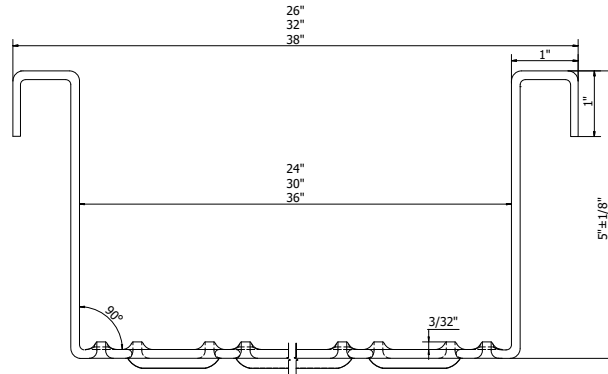
U: uniform load (lb./ft.<sup>2</sup>)      C: concentrated load (lb.)      D=Deflection (in.)

Material Gauge	Channel Depth in. (mm)	Weight lb./lin. ft. (kg/m)	Catalog Number	Span																	
				2'	2.5'	3'	3.5'	4'	4.5'	5'	5.5'	6'	6.5'	7"	7.5'	8'	9'	10'	11'	12'	
Steel 11 ga.	2 (50.8)	11.8 (17.5)	<b>QO-PS-162011</b>	U	956	612	425	312	239	189	153	126	106	91	77	68	60	47	38	32	27
				D	0.02	0.03	0.04	0.05	0.07	0.09	0.11	0.13	0.16	0.18	0.21	0.24	0.28	0.35	0.43	0.52	0.62
				C	2564	2051	1709	1465	1282	1140	1026	932	855	789	733	684	641	570	513	466	427
			<b>QO-PS-163011</b>	D	0.01	0.02	0.03	0.04	0.06	0.07	0.09	0.10	0.12	0.15	0.17	0.20	0.22	0.28	0.35	0.42	0.50
				U	1413	904	628	461	353	279	226	187	157	134	116	100	89	70	57	46	39
				D	0.02	0.03	0.04	0.06	0.08	0.10	0.12	0.14	0.17	0.20	0.23	0.26	0.30	0.38	0.47	0.57	0.67
	3 (76.2)	12.7 (18.9)	<b>QO-PS-163011</b>	C	3802	3041	2534	2172	1901	1690	1521	1382	1267	1170	1086	1014	950	845	760	691	634
				D	0.01	0.02	0.03	0.04	0.05	0.07	0.09	0.10	0.12	0.14	0.17	0.19	0.22	0.28	0.34	0.41	0.53
				U	2240	1434	996	731	560	443	358	296	249	212	183	159	140	111	91	75	64
			<b>QO-PS-164011</b>	D	0.01	0.02	0.03	0.04	0.06	0.07	0.09	0.11	0.13	0.15	0.17	0.20	0.23	0.29	0.36	0.44	0.52
				C	5838	4670	3892	3336	2919	2595	2335	2123	1946	1796	1668	1557	1459	1297	1168	1061	973
				D	0.01	0.02	0.02	0.03	0.04	0.05	0.07	0.08	0.09	0.11	0.13	0.15	0.17	0.21	0.26	0.32	0.38



## O-Grip Safety Grating O-Grip Walkway

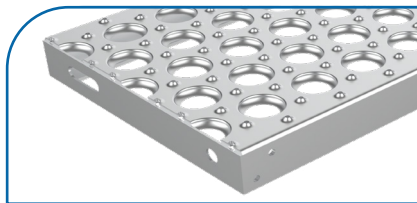
Available width: 24", 30", 36"



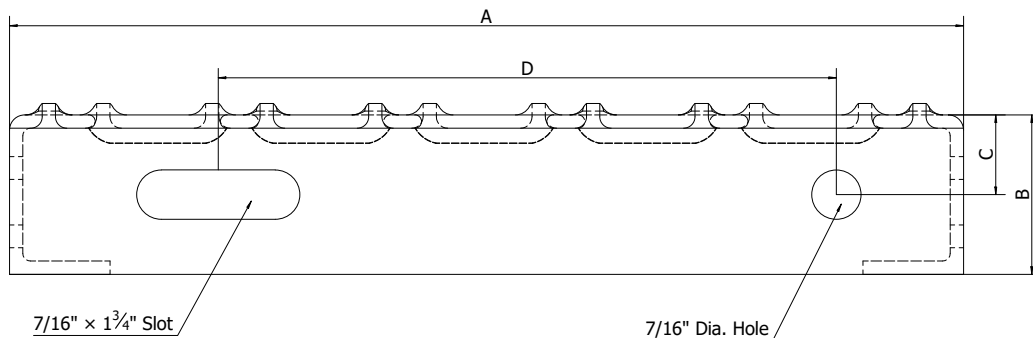
### Load Table of Walkway – 24", 30", 36" Width

U: uniform load (lb./ft. <sup>2</sup> )			C: concentrated load (lb.)			D=Deflection (in.)															
Material Gauge	Channel Depth in. (mm)	Weight lb./lin. ft. (kg/m)	Catalog Number	Span																	
				2'	2.5'	3'	3.5'	4'	4.5'	5'	5.5'	6'	6.5'	7'	7.5'	8'	9'	10'	11'	12'	
Steel 11 ga.	5 (127.0)	11.8 (17.5)	<b>QO-WS-135011</b>	U	5751	3681	2556	1878	1438	1136	920	760	639	544	469	409	359	284	230	190	160
				D	0.02	0.02	0.04	0.05	0.06	0.08	0.10	0.12	0.14	0.16	0.19	0.22	0.25	0.31	0.39	0.47	0.56
				C	9504	7603	6336	5431	4752	4224	3802	3456	3168	2924	2715	2534	2376	2112	1901	1728	1584
				D	0.01	0.01	0.02	0.03	0.04	0.05	0.06	0.07	0.08	0.10	0.11	0.13	0.15	0.19	0.23	0.28	0.34
	5 (127.0)	13.6 (20.2)	<b>QO-WS-165011</b>	U	3868	2475	1719	1263	967	764	619	511	430	366	316	275	242	191	155	128	107
				D	0.01	0.02	0.03	0.04	0.05	0.06	0.08	0.10	0.12	0.13	0.16	0.18	0.20	0.26	0.32	0.39	0.46
				C	9534	7627	6356	5448	4767	4237	3813	3467	3178	2933	2724	2542	2383	2119	1907	1733	1589
				D	0.00	0.01	0.02	0.03	0.04	0.05	0.06	0.07	0.08	0.10	0.11	0.13	0.15	0.19	0.23	0.28	0.33

Notes: For 36" walkway channel load information, please contact with us.



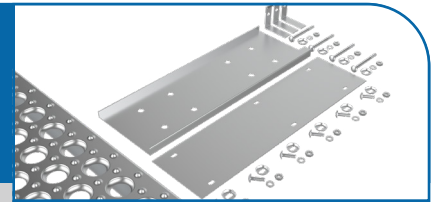
## O-Grip Safety Grating O-Grip Stair Tread



### Specification of O-Grip Stair Tread

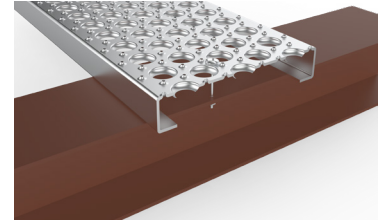
Item	Width		A		B		C		D	
	inch	mm	inch	mm	inch	mm	inch	mm	inch	mm
2-hole	5	127	4-15/16	125	1-1/2	38	3/4	19	2	51
					2	51	1	25	2	51
3-hole	7	178	6-15/16	176	1-1/2	38	3/4	19	4	102
					2	51	1	25	4	102
5-hole	10	254	9-15/16	245	1-1/2	38	3/4	19	7	178
					2	51	1	25	7	178
6-hole	12	305	11-15/16	303	1-1/2	38	3/4	19	9	227
					2	51	1	25	9	227

# Accessories for O-Grip Safety Gratings



**Table-1: Kit List of Bolt Washer Seat**

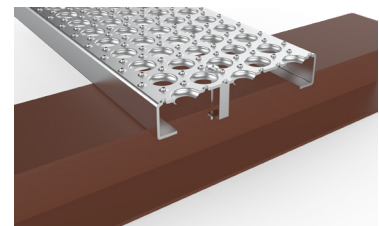
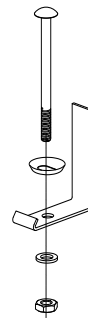
Item	Size	Number
Bolt Washer Seat	Standard	1
Carriage Bolt	3/8" - 16	1
Flat Washer	3/8"	1
Hex Nut	3/8" - 16	1
Note	1.Plank carriage bolt height = side channel height + 1". 2.Walkway way carriage bolt: 5/16"-18 x 2". 3.Field drilling is required.	



Bolt washer seat

**Table-2: Kit List of P-Bolt Seat**

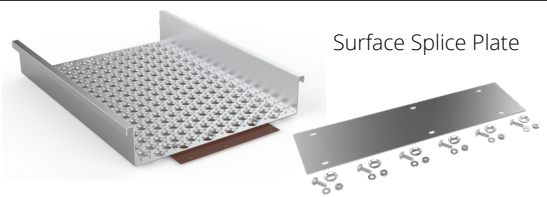
Item	Size	Number
P-Bolt Seat	Standard	1
Carriage Bolt	3/8" - 16	1
Flat Washer	3/8"	1
Hex Nut	3/8" - 16	1
Note	1.Plank carriage bolt height = side channel height + 1". 2.Walkway way carriage bolt: 5/16"-18 x 2".	



Bolt washer seat

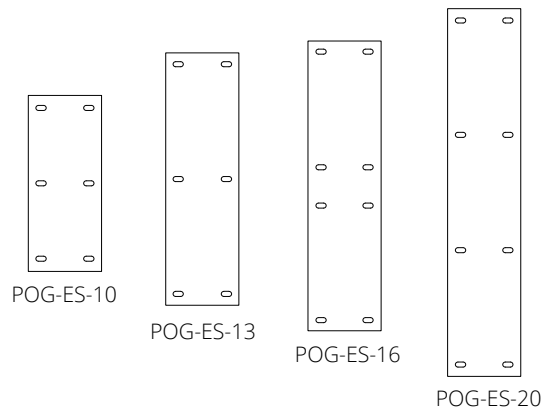
**Table-3: Kit List of Surface Splice Plate**

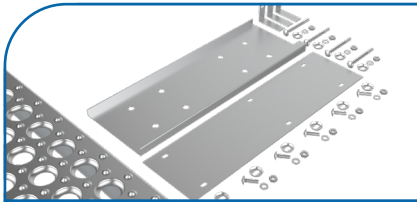
Item	Size	Number
Carriage Bolt	3/8"	6/8
Flat Washer	3/8"	6/8
Bolt Seats	3/8"	6/8



Surface Splice Plate

POG-ES-10 is designed for 18" wide plank.  
 POG-ES-13 is designed for 24" wide plank.  
 POG-ES-16 is designed for 30" wide plank.  
 POG-ES-20 is designed for 36" wide plank.

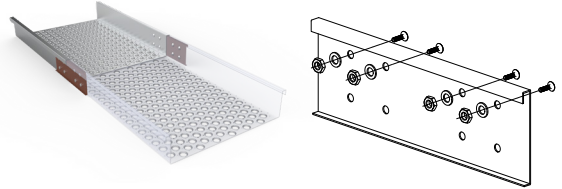




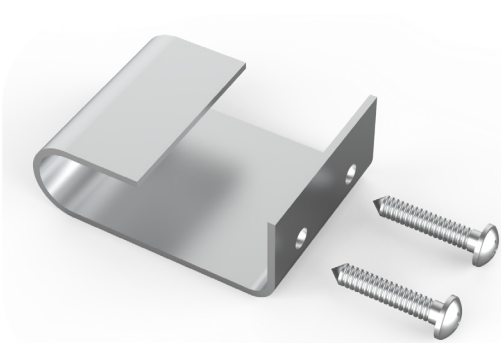
# O-Grip Safety Grating O-Grip Stair Tread

Table-4: Kit List of 30" Long Walkway Splice Plate

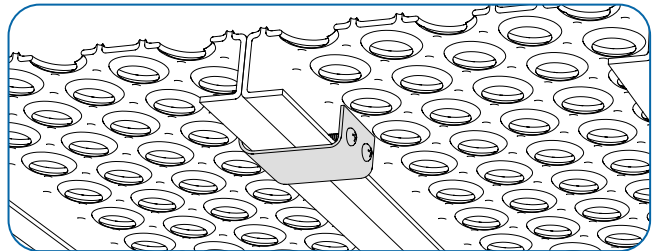
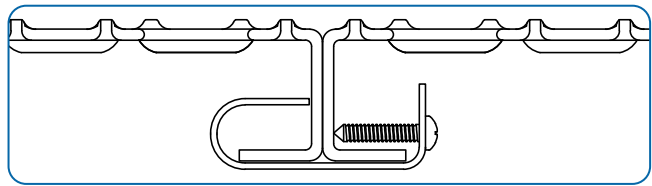
Item	Size	Number
Splice Plate	4-1/2" x 30"	2
Hex Bolt	1/2" x 1-1/4"	32
Hex Nut	1/2"-13	32
Washers	1/2"	32
Material	11 gauge mill galvanized steel plate	



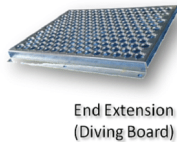
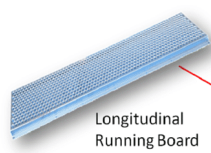
Long Walkway Splice Plate



Mid Support Clip



## Application





Address: Industrial Development Zone, Anping, Hebei, China.

Mobile: +86-18703384586 (WhatsApp)

Tel: +86-318-5183833

Fax: +86-318-5183833

E-mail: [sale@qs-wiremesh.com](mailto:sale@qs-wiremesh.com)

<https://www.qs-wiremesh.com>

