



**QIUSUO PRODUCT  
2025**

---

# **Aluminum Expanded Mesh**

---

**QIUSUO® - Customizing All Types of Aluminum  
Expanded Mesh Products for Your Projects**

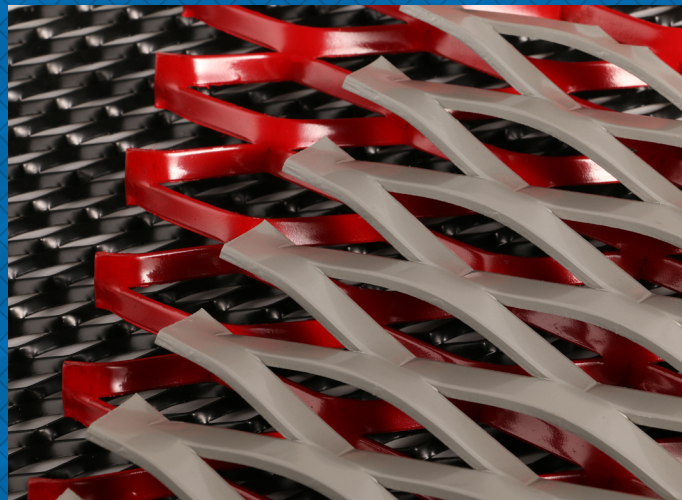
**HEBEI QIUSUO WIRE MESH PRODUCTS CO., LTD**

**[www.qs-wiremesh.com](http://www.qs-wiremesh.com)**

# Aluminum Expanded Mesh

Aluminum expanded mesh with changing style and colorful surface spraying and excellent rust resistance is widely used for architectural application and decorative demands.

The use of decorative aluminum expanded mesh as the architectural material can create nice the color, shape and sustainability of a building ceiling, cladding and curtain wall.



## Specification

*Versatile Sizes can satisfy most of your applications*

- **Material** Aluminum alloy 1060/3003/5052/6061 and etc
- **Thickness** 1 mm to 10 mm
- **Hole patterns** diamond, hexagonal triangle and customized patterns against order
- **Panel size** Largest width can be 3000mm and length 4000mm. And Any special shape and size are available, cutting it according to your drawings.

## Specification of aluminum expanded metal sheet

| Item     | Design size (Inch) |       | Opening size (Inch) |       | Strand size (Inch) |       | Open area (%) |
|----------|--------------------|-------|---------------------|-------|--------------------|-------|---------------|
|          | SWD                | LWD   | SWO                 | LWO   | Thickness          | Width |               |
| QSAEM-01 | 0.500              | 1.200 | 0.375               | 0.937 | 0.05               | 0.093 | 65            |
| QSAEM-02 | 0.500              | 1.270 | 0.312               | 1.000 | 0.04               | 0.104 | 61            |
| QSAEM-03 | 0.500              | 1.200 | 0.375               | 0.937 | 0.08               | 0.096 | 60            |
| QSAEM-04 | 0.500              | 1.270 | 0.312               | 1.000 | 0.06               | 0.105 | 58            |
| QSAEM-05 | 0.923              | 2.000 | 0.812               | 1.750 | 0.05               | 0.109 | 78            |
| QSAEM-06 | 0.923              | 2.125 | 0.750               | 1.812 | 0.04               | 0.122 | 72            |
| QSAEM-07 | 0.923              | 2.000 | 0.750               | 1.680 | 0.08               | 0.129 | 76            |
| QSAEM-08 | 0.923              | 2.125 | 0.690               | 1.750 | 0.07               | 0.143 | 70            |
| QSAEM-09 | 1.330              | 3.000 | 1.149               | 2.500 | 0.08               | 0.128 | 81            |
| QSAEM-10 | 1.330              | 3.150 | 1.044               | 2.750 | 0.06               | 0.143 | 78            |

# Aluminum Expanded Mesh

One-Stop Shop for the Best Ordering Solution

## Surface treatment

- Epoxy resin Powder Coating
- PE (Polyester) Coating
- PVDF (Fluorocarbon) Coating
- Anodic oxidation
- Coating material brand: KCC, PPG, Akzo Nobel, Becker and etc.

## Features of Decorative Aluminum Expanded Mesh

- A wide range of colors and openings, good decoration effect
- Openings permit free flow of light, heat, sound & air
- It won't unravel when cut, unlike woven wire mesh
- Available in a variety of mesh configurations and decorative patterns
- Cost effective and environmentally friendly
- Light weight , fine rigidity , high strength
- Light weight is ideal for outer wall hanging
- Durability and low maintenance
- Good weather and corrosion resistance

## Application of Decorative Aluminum Expanded Mesh

*The versatility of expanded metal makes it have countless applications in architectural, commercial, industrial, building and other industries, ideal decorative applications include:*

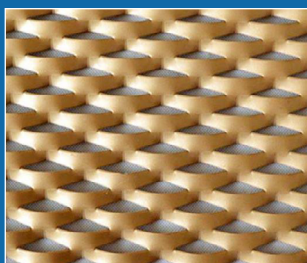
- Cladding
- Balustrades
- Room decoration
- Patio furniture
- Fencing
- Interior partitions
- Infill panels
- Machine guards
- Sun screening
- Exhibition stand
- Air intake screens
- Ceilings
- Transportation shelters



## ALUMINUM EXPANDED MESH

### Our Service

- Ten years of experience and professional technology
- All products are compatible with economic and environmental design
- Professional QC group control the quality
- Security package
- Free samples
- Certificates: SGS, ISO 9001 2000, CE, KYNAR 500



UV resistant coating  
decorative aluminum  
expanded mesh



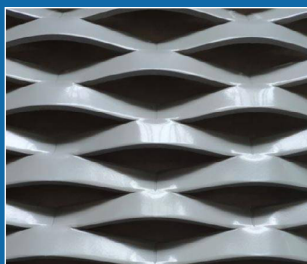
UV resistant coating  
decorative aluminum  
expanded mesh



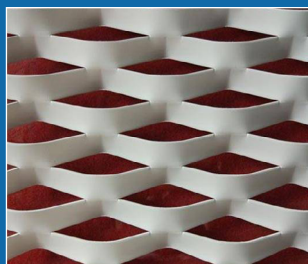
UV resistant coating  
decorative aluminum  
expanded mesh



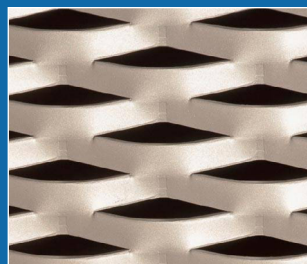
UV resistant coating  
decorative aluminum  
expanded mesh



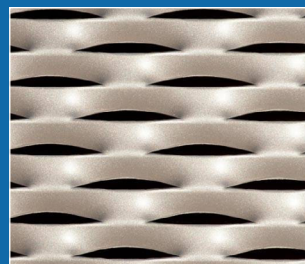
Powder coating decorative  
aluminum expanded mesh



Powder coating decorative  
aluminum expanded mesh



PVDF (Fluorocarbon)  
Coating decorative  
aluminum expanded mesh



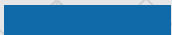
PVDF (Fluorocarbon)  
Coating decorative  
aluminum expanded mesh




PVDF (Fluorocarbon)  
Coating decorative  
aluminum expanded mesh




PVDF (Fluorocarbon)  
Coating decorative  
aluminum expanded mesh



 Industrial Development Zone, Anping, Hebei, China.

 +86-318-5183833

 +86-18703384586 (WhatsApp & WeChat)

 [sales@qs-wiremesh.com](mailto:sales@qs-wiremesh.com)

 [www.qs-wiremesh.com](http://www.qs-wiremesh.com)



**HEBEI QIUSUO WIRE MESH PRODUCTS CO., LTD**